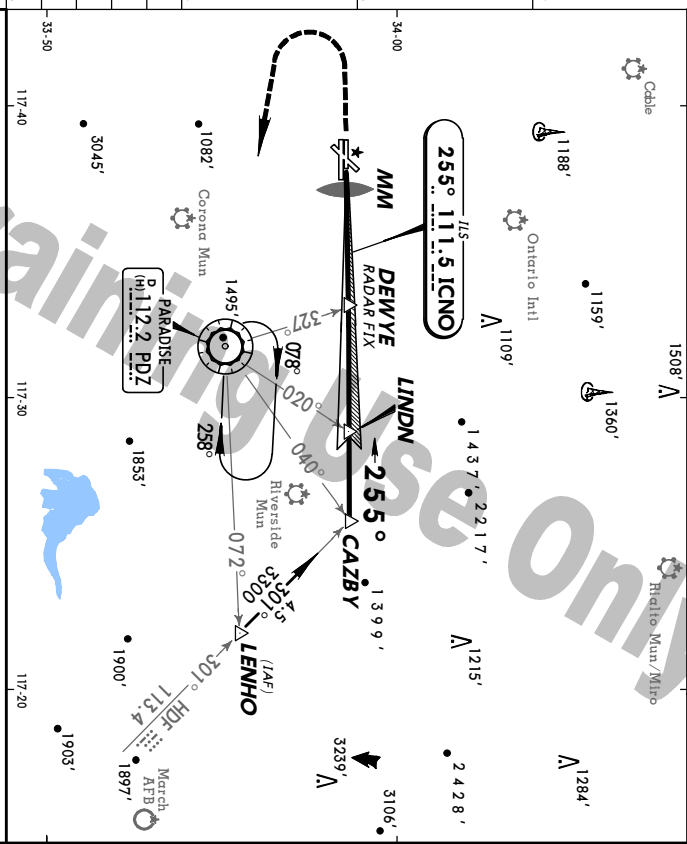
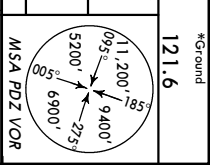


KCNO **JEPPESSEN** **CHINO, CALIF**
 CHINO 18 AUG 00 (11-1) **CHINO Tower** **ILS Rwy 26R**

LOC ICNO 111.5	Final Aptch Crs 255°	GS DEWYE 1940' (1304')	ILS DA(H) 836' (200')	Apt Elev 652'	TDZE 636'
*ATIS 125.85				*CHNO Tower CTAF 118.5	
SOCAL Approach (R) 135.4			*Ground 121.6		
MISSED APCH: Climb to 1100' then climbing LEFT turn to 4000' direct PDZ VOR and hold.					
Pilot controlled lighting 118.5.					



TDZE 636'	0	0.6	3.3	3.9	3.6	7.5	2.6	10.1
Grnd speed-Kts	70	90	100	120	140	160		
GS	3:00°	376	483	557	645	752	860	
DEWYE to MAP	3.9	3.21	2.36	2:20	1:57	1:40	1:28	

ILS DA(H) 836' (200')	LOC (GS out) MDA(H) 1080' (444')	Max Kts 90	MDA(H) 120
STRAIGHT-IN LANDING Rwy 26R		CIRCLE-TO-LAND	
1100' 4000'		PDZ 112.2	

A	1	1180' (528') - 1
B	1/4	1180' (528') - 1/2
C	1/2	1220' (568') - 2
D	1/2	165

For Training Use Only

JEPPESSEN

27 NOV 98 **13-3**

EF 3 Desc

RIVERSIDE, CALIF

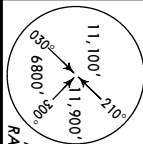
RIVERSIDE MUN

VOR or GPS-B

VOR 112.4 RAL

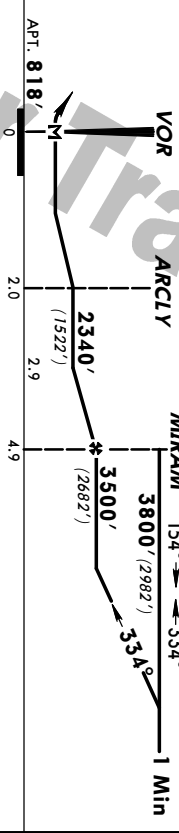
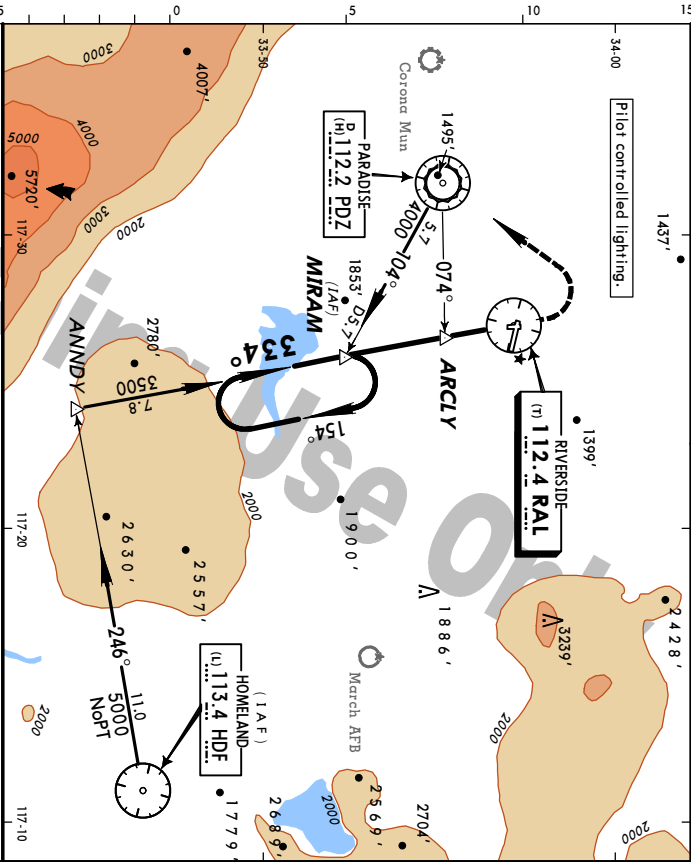
RAL VOR Elev 818'

*ATIS **128.8**
 SOCIAL Approach (R) **135.4**
 *RIVERSIDE Tower CTAF **121.0**
 *Ground **121.7**



34.00

Pilot controlled lighting:



MISSED APPROACH: Climbing LEFT turn to 5500' direct PDZ VOR.

CIRCLE-TOLAND

With Arclly Without Arclly

Max Alt fts	MDA/HI	MDA/HI
A 90	1660' (842') - 1	2340' (1522') - 1 1/4
B 120	1660' (842') - 1 1/4	2340' (1522') - 1 1/2
C	NA	NA
D	NA	NA

MAP at VOR									
A									
M									
N									
K									
D									

For Training Use Only