

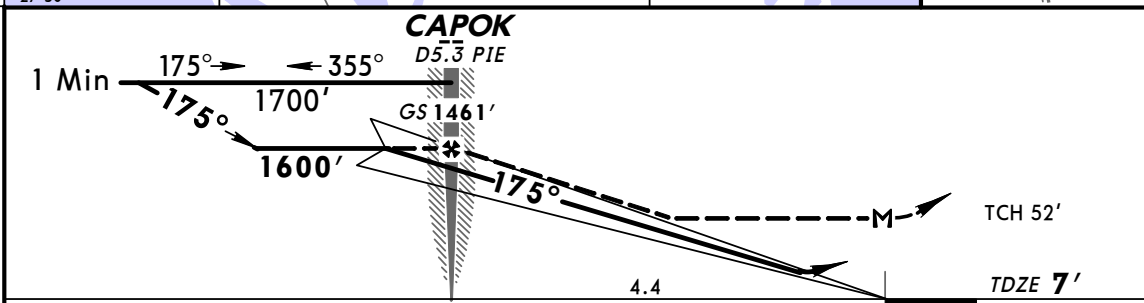
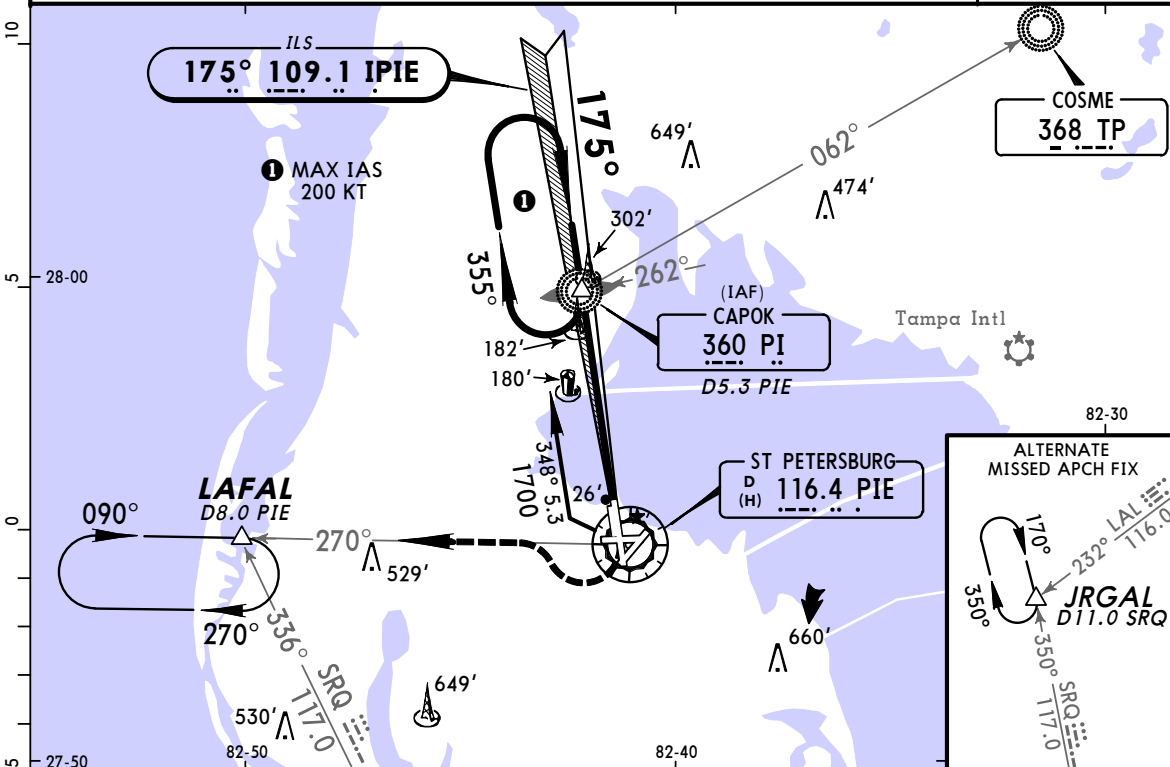
KPIE/PIE
ST PETERSBURG
-CLEARWATER INTL



ST PETERSBURG
-CLEARWATER, FLA
ILS or LOC Rwy 17L

14 NOV 08 (11-1)

ATIS (ASOS when Twr inop) 134.5		TAMPA Approach (R) 125.3		*ST PETERSBURG Tower 118.3		ST PETERSBURG Radio (LAA) CTAF 118.3 when Twr inop.		*Ground 121.9	
LOC IPIE 109.1		Final Apch Crs 175°		GS CAPOK 1461' (1454')		ILS DA(H) (CONDITIONAL) 207' (200')		Apt Elev 11' TDZE 7'	
MISSED APCH: Climb to 500' then climbing RIGHT turn to 1700' outbound via PIE VOR R-270 to LAFAL INT/D8.0 PIE and hold.									
Alt Set: INCHES Trans level: FL 180 Trans alt: 18000' 1. ADF or DME required. 2. Use local altimeter setting; if not received use Tampa Intl altimeter setting. 3. VGSI and ILS glidepath not coincident.									



Gnd speed-Kts	70	90	100	120	140	160	MALSR PAPI	500'	1700'	PIE	LAFAL
GS	3:00°	377	484	538	646	861		↑	RT	via 116.4 R-270	
CAPOK to MAP 4.4	3:46	2:56	2:38	2:12	1:53	1:39					

STRAIGHT-IN LANDING RWY 17L						CIRCLE-TO-LAND				
1 ILS DA(H) 207' (200')			2 LOC (GS out) MDA(H) 440' (433')			With Local Altimeter Setting		With Tampa Intl Altimeter Setting		
FULL			TDZ or CL out		RAIL or ALS out	RAIL out		ALS out	Max Kts	
A				RVR 24 or 1/2	RVR 40 or 3/4	RVR 50 or 1	90	520' (509') - 1	560' (549') - 1	
B	RVR 18 or 1/2	RVR 24 or 1/2	RVR 40 or 3/4	RVR 40 or 3/4	RVR 60 or 1/4		120	520' (509') - 1 1/2	560' (549') - 1 1/2	
C				RVR 50 or 1			140	580' (569') - 2	620' (609') - 2	
D							165			

1 DA(H) 230' (223') with Tampa Intl altimeter setting.
2 MDA(H) 480' (473') with Tampa Intl altimeter setting.

CHANGES: SRQ VOR frequency.

© JEPPESEN, 2002, 2008. ALL RIGHTS RESERVED.

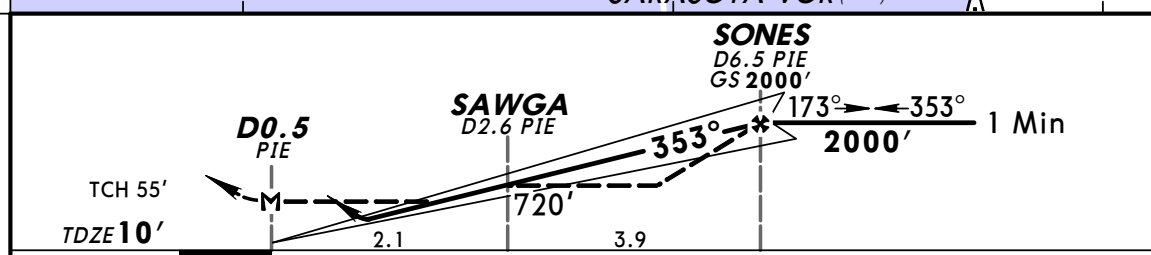
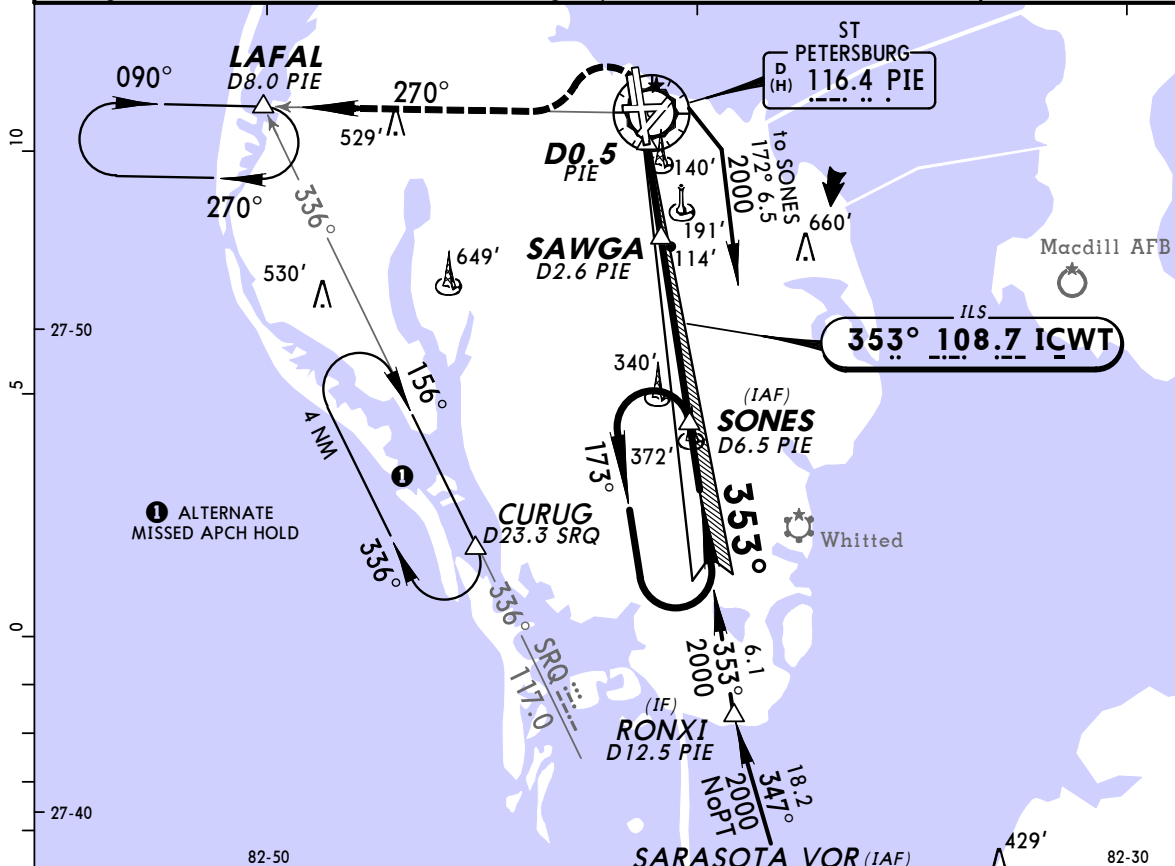
FOR TRAINING USE ONLY

KPIE/PIE
ST PETERSBURG
-CLEARWATER INTL

JEPPesen
 14 NOV 08 (11-2)

ST PETERSBURG
-CLEARWATER, FLA
ILS or LOC DME Rwy 35R

ATIS (ASOS when Twr inop)	TAMPA Approach (R)	*ST PETERSBURG Tower	ST PETERSBURG Radio (LAA)	*Ground
134.5	125.3	118.3	CTAF 118.3 when Twr inop.	121.9
LOC ICWT 108.7	Final Apch Crs 353°	GS SONES 2000' (1990')	ILS DA(H) (CONDITIONAL) 210' (200')	Apt Elev 11' TDZE 10'
MISSED APCH: Climb to 600' then climbing LEFT turn to 2000' outbound via PIE VOR R-270 to LAFAL INT/D8.0 PIE and hold.				
Alt Set: INCHES Trans level: FL 180 Trans alt: 18000' 1. RADAR or DME required. 2. Simultaneous reception of ICWT and PIE DME required. 3. Use local altimeter setting; if not received, use Tampa Intl altimeter setting. 4. DME from PIE VOR. 5. VGSI and ILS glidepath not coincident.				



Gnd speed-Kts	70	90	100	120	140	160	PAPI-L	600'	2000'	PIE	via 116.4 R-270	LAFAL
GS	3.00°	377	484	538	646	753						
MAP at DO.5 PIE												

TERPS	STRAIGHT-IN LANDING RWY 35R				CIRCLE-TO-LAND	
	ILS	LOC (GS out)	LOC (GS out)	LOC (GS out)	With Local Altimeter Setting	With Tampa Intl Altimeter Setting
	DA(H) 210' (200')	DA(H) 233' (223')	MDA(H) 380' (370')	MDA(H) 420' (410')	Max Kts	MDA(H)
A	With Local Altimeter Setting	With Tampa Intl Altimeter Setting	With Local Altimeter Setting	With Tampa Intl Altimeter Setting	90	520' (509')-1
B			1	1	120	560' (549')-1
C	3/4	3/4		1 1/4	140	520' (509')-1 1/2
D			1 1/4		165	580' (569')-2
						620' (609')-2

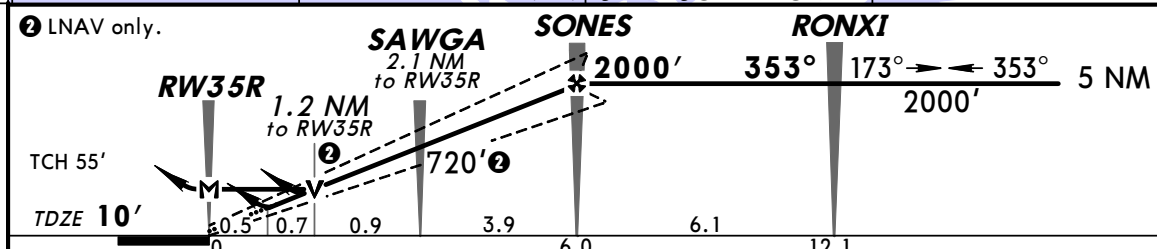
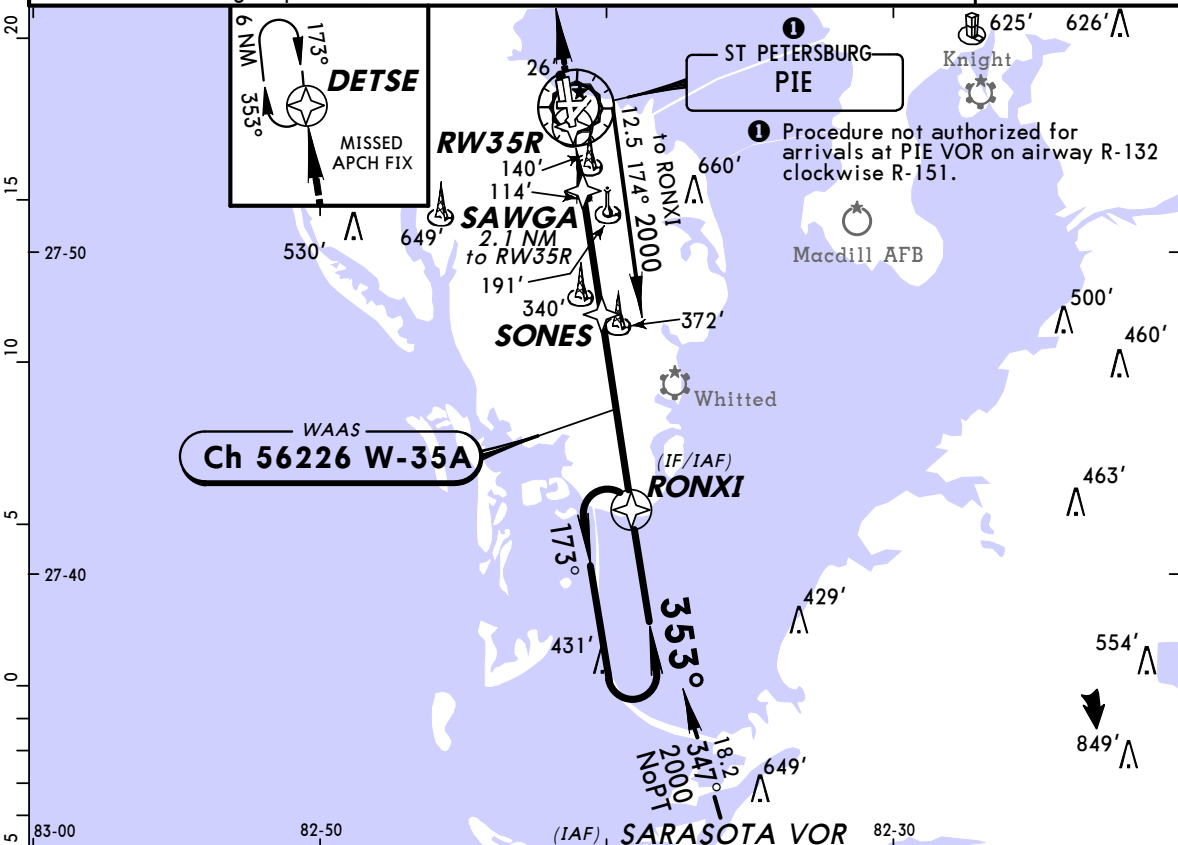
FOR TRAINING USE ONLY

KPIE/PIE
ST PETERSBURG
-CLEARWATER INTL

19 SEP 08 **(12-2)** Eff 25 Sep

ST PETERSBURG
-CLEARWATER, FLA
RNAV (GPS) Rwy 35R

ATIS (ASOS when Twr inop) 134.5		TAMPA Approach (R) 125.3	*ST PETERSBURG Tower 118.3	ST PETERSBURG Radio (LAA) CTAF 118.3 when Twr inop.	*Ground 121.9
WAAS Ch 56226 W-35A	Final Apch Crs 353°	Minimum Alt SONES 2000' (1990')	LPV DA(H) (CONDITIONAL) 210' (200')	Apt Elev 11' TDZE 10'	2700' MSA RW35R
MISSED APCH: Climb to 2600' direct DETSE and hold. Alt Set: INCHES Trans level: FL 180 Trans alt: 18000' 1. Use local altimeter setting; if not received use Tampa Intl altimeter setting. 2. For uncompensated Baro-VNAV systems, LNAV/VNAV not authorized below -15°C (5°F) or above 49°C (120°F). 3. DME/DME RNP-0.3 not authorized. 4. VDP and Baro-VNAV not authorized when using Tampa Intl altimeter setting. 5. VGSI and RNAV glidepath not coincident.					



Gnd speed-Kts	70	90	100	120	140	160	PAPI-L	2600'	D	DETSE
Glide Path Angle	3.00°	372	478	531	637	743				
MAP at RW35R										

	STRAIGHT-IN LANDING RWY 35R			CIRCLE-TO-LAND	
	1 LPV DA(H) 210' (200')	2 LNAV/VNAV DA(H) 448' (438')	3 LNAV MDA(H) 460' (450')	With Local Altimeter Setting MDA(H)	With Tampa Intl Altimeter Setting MDA(H)
A			1	90 520'(509')-1	560'(549')-1
B				120	
C	3/4	1/2	1 1/4	140 520'(509')-1 1/2	560'(549')-1 1/2
D			1 1/2	165 580'(569')-2	620'(609')-2

1 DA(H) 233'(223') with Tampa Intl altimeter setting. 3 MDA(H) 500'(490') with Tampa Intl altimeter setting.
 2 DA(H) 471'(461') with Tampa Intl altimeter setting.

FOR TRAINING USE ONLY

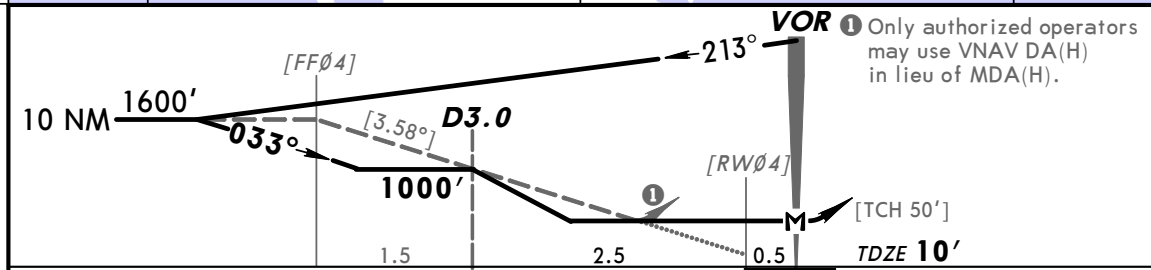
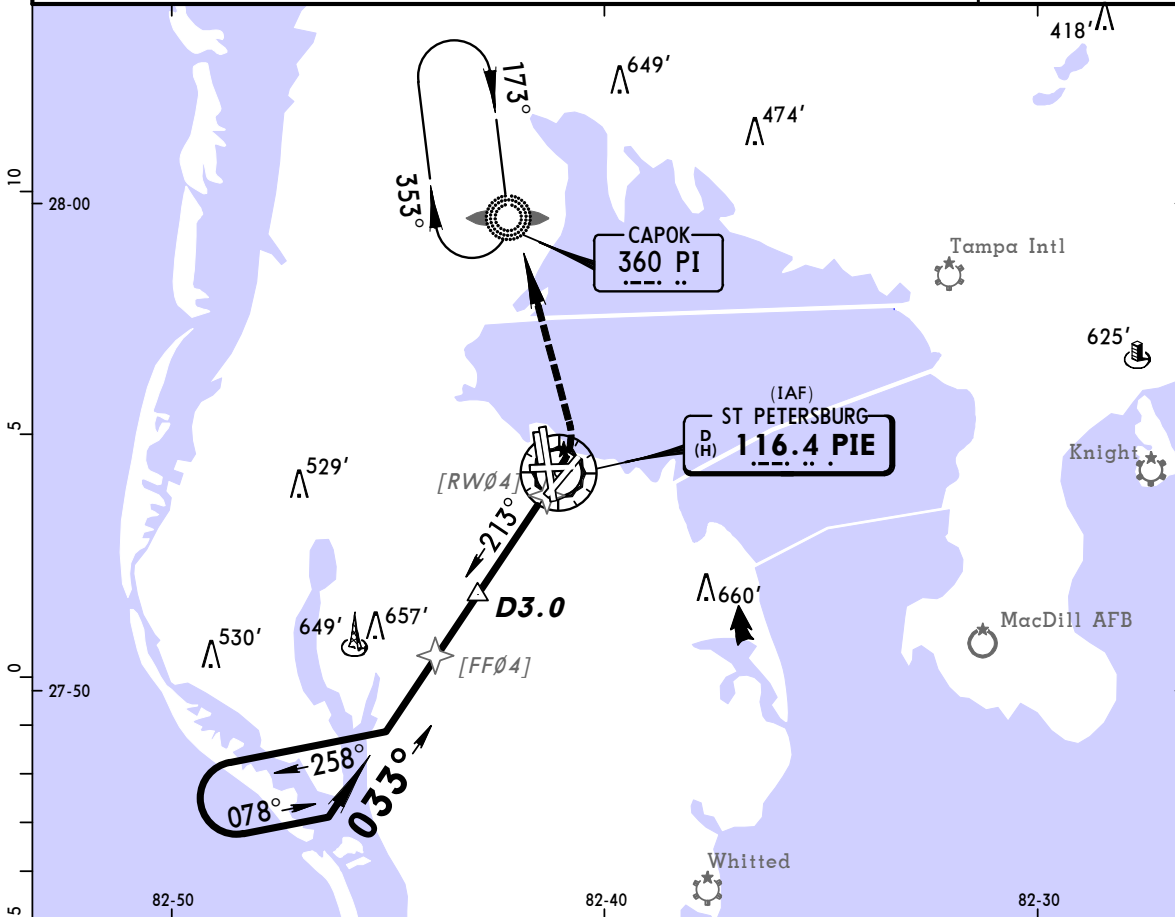
KPIE/PIE
ST PETERSBURG
-CLEARWATER INTL



30 MAY 08 (13-1) Eff 5 Jun

ST PETERSBURG
-CLEARWATER, FLA
VOR Rwy 4

ATIS (ASOS when Twr inop) 134.5		TAMPA Approach (R) 125.3		*ST PETERSBURG Tower 118.3		ST PETERSBURG Radio (LAA) CTAF 118.3 when Twr inop.		*Ground 121.9	
VOR PIE 116.4		Final Apch Crs 033°		Minimum Alt D3.0 1000' (990')		MDA(H) (CONDITIONAL) 460' (450')		Apt Elev 11' TDZE 10'	
MISSED APCH: Climbing LEFT turn to 1600' direct to PI LOM and hold.									2700' MSA PIE VOR
Alt Set: INCHES 1. ADF required.			Trans level: FL 180			Trans alt: 18000'			



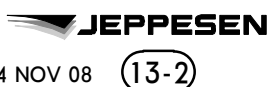
Gnd speed-Kts	70	90	100	120	140	160	REIL	1600'	PI
Descent angle [3.58°]	444	570	634	760	887	1014	PAPI-L	LT	360
MAP at VOR									

	STRAIGHT-IN LANDING RWY 4		CIRCLE-TO-LAND	
	MDA(H) 460' (450') With D3.0	MDA(H) 1000' (990') Without D3.0	With D3.0	Without D3.0
A	1	1 1/4	520' (509') - 1	1000' (989') - 1 1/4
B	1 1/4	1 1/2	520' (509') - 1 1/2	1000' (989') - 1 1/2
C	1 1/2	3	520' (509') - 1 1/2	1000' (989') - 3
D	1 1/2	3	580' (569') - 2	1000' (989') - 3

TERPS

FOR TRAINING USE ONLY

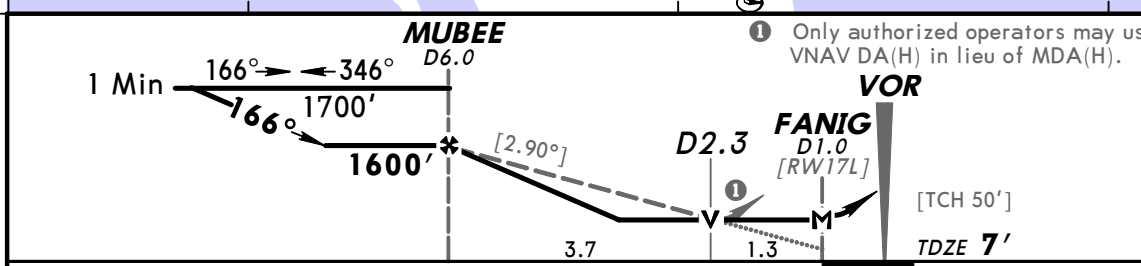
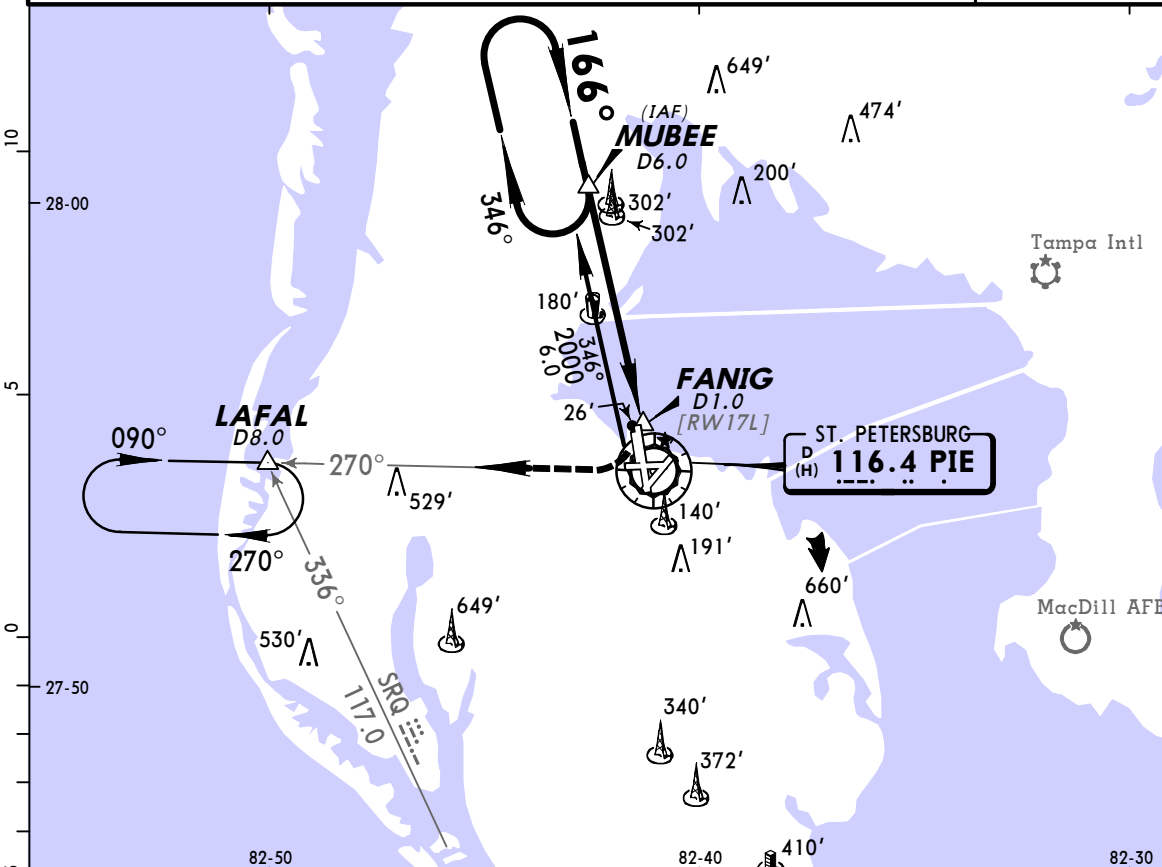
KPIE/PIE
ST PETERSBURG
-CLEARWATER INTL



ST PETERSBURG
-CLEARWATER, FLA
VOR DME Rwy 17L

14 NOV 08 (13-2)

ATIS (ASOS when Twr inop)		TAMPA Approach (R)		*ST PETERSBURG Tower		ST PETERSBURG Radio (LAA)		*Ground		
134.5		125.3		118.3		CTAF 118.3 when Twr inop.		121.9		
VOR PIE 116.4	Final Apch Crs 166°	Minimum Alt MUBEE 1600' (1593')	MDA(H) 480' (473')	Apt Elev 11'		TDZE 7'		2700'		
MISSED APCH: Climbing RIGHT turn to 1700' outbound via PIE VOR R-270 to LAFAL/D8.0 and hold.										
Alt Set: INCHES			Trans level: FL 180			Trans alt: 18000'			MSA PIE VOR	



Gnd speed-Kts	70	90	100	120	140	160	MALSR PAPI	1700'	PIE via 116.4 R-270	LAFAL
Descent angle [2.90°]	359	462	513	616	718	821				
MAP at FANIG										

STRAIGHT-IN LANDING RWY 17L				CIRCLE-TO-LAND	
MDA(H) 480' (473')					
	RAIL out		ALS out		Max Kts
A	RVR 24 or 1/2	RVR 40 or 3/4	RVR 50 or 1		90
B					120
C	RVR 40 or 3/4	RVR 60 or 1/4			140
D	RVR 50 or 1	1 1/2			165
					MDA(H)
					520' (509') - 1
					520' (509') - 1 1/2
					580' (569') - 2

TERPS © 02/01/08

CHANGES: SRQ VOR frequency.

© JEPPESEN, 2003, 2008. ALL RIGHTS RESERVED.

FOR TRAINING USE ONLY

KPIE/PIE
ST PETERSBURG
-CLEARWATER INTL

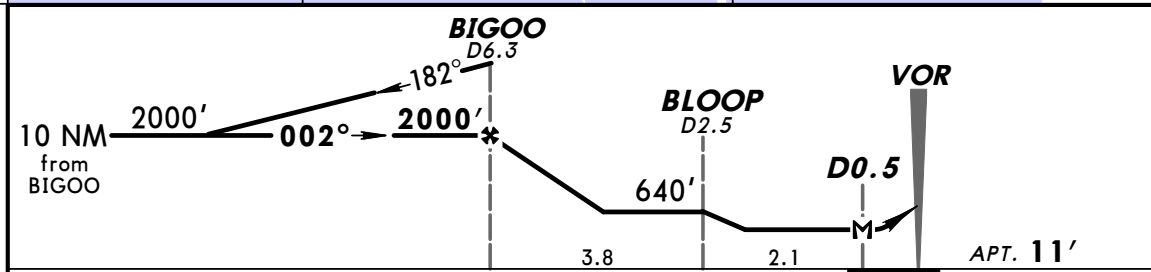
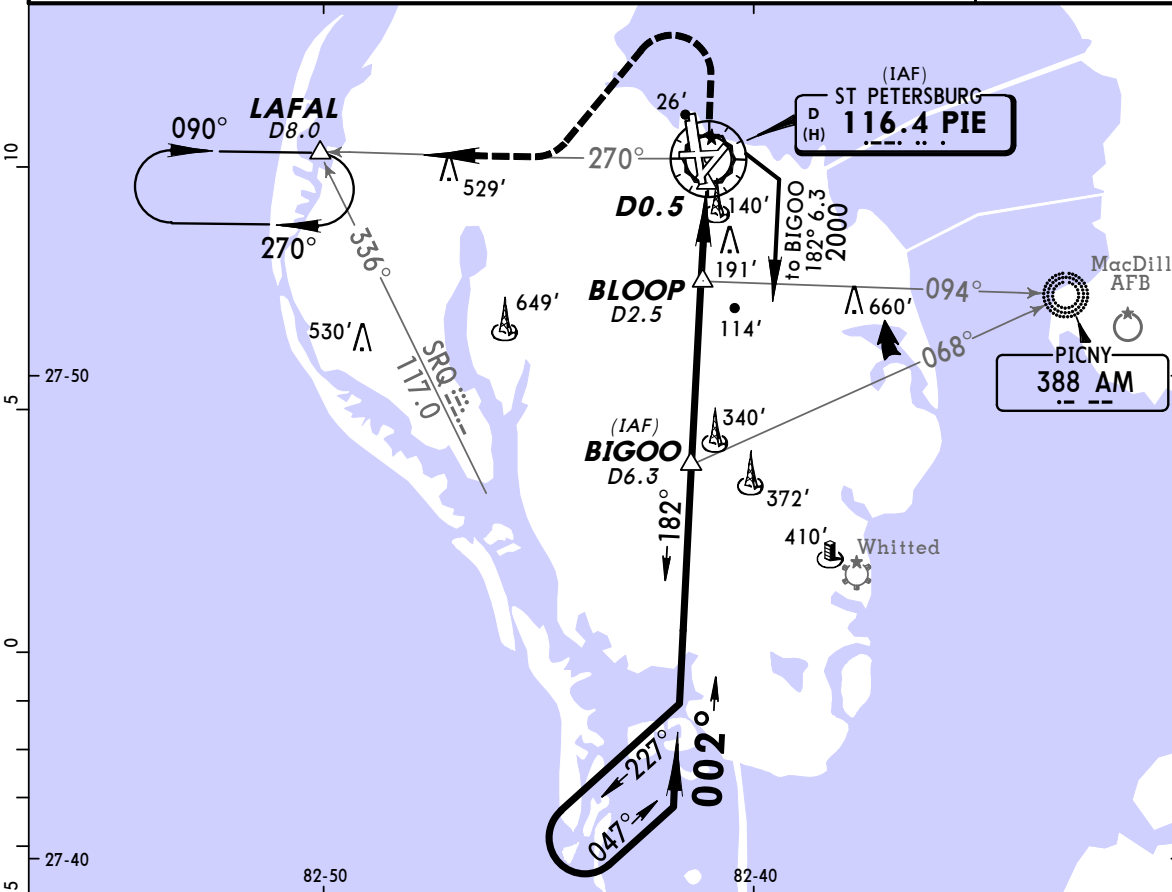


ST PETERSBURG
-CLEARWATER, FLA
VOR Rwy 35R

14 NOV 08 (13-3)

BRIEFING STRIP™

ATIS (ASOS when Twr inop)	TAMPA Approach (R)	*ST PETERSBURG Tower	ST PETERSBURG Radio (LAA)	*Ground
134.5	125.3	118.3	CTAF 118.3 when Twr inop.	121.9
VOR PIE 116.4	Final Apch Crs 002°	Minimum Alt BIGOO 2000' (1989')	MDA(H) Refer to Minimums	Apt Elev 11'
MISSED APCH: Climb to 1200' then climbing LEFT turn to 1600' outbound via PIE VOR R-270 to LAFAL INT/D8.0 and hold.				2700' MSA PIE VOR
Alt Set: INCHES		Trans level: FL 180	Trans alt: 18000'	



Gnd speed-Kts	70	90	100	120	140	160	PAPI-L	1200'	1600'	PIE via 116.4 R-270	LAFAL
MAP at D0.5 or BIGOO to MAP	5.9	5:03	3:56	3:32	2:57	2:32					

		CIRCLE-TO-LAND	
		With Bloop	Without Bloop
	Max Kts	MDA(H)	MDA(H)
A	90	520'(509')-1	640'(629')-1
B	120	520'(509')-1	640'(629')-1
C	140	520'(509')-1½	640'(629')-1¾
D	165	580'(569')-2	640'(629')-2

TERPS

CHANGES: SRQ VOR frequency.

FOR TRAINING USE ONLY