

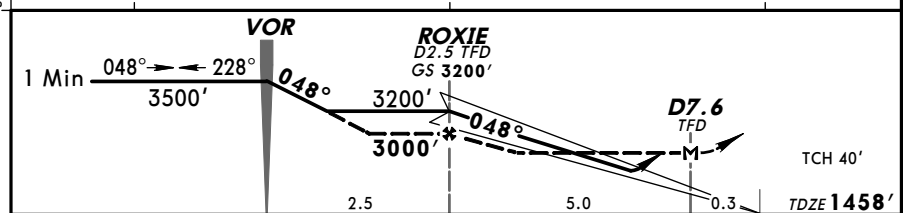
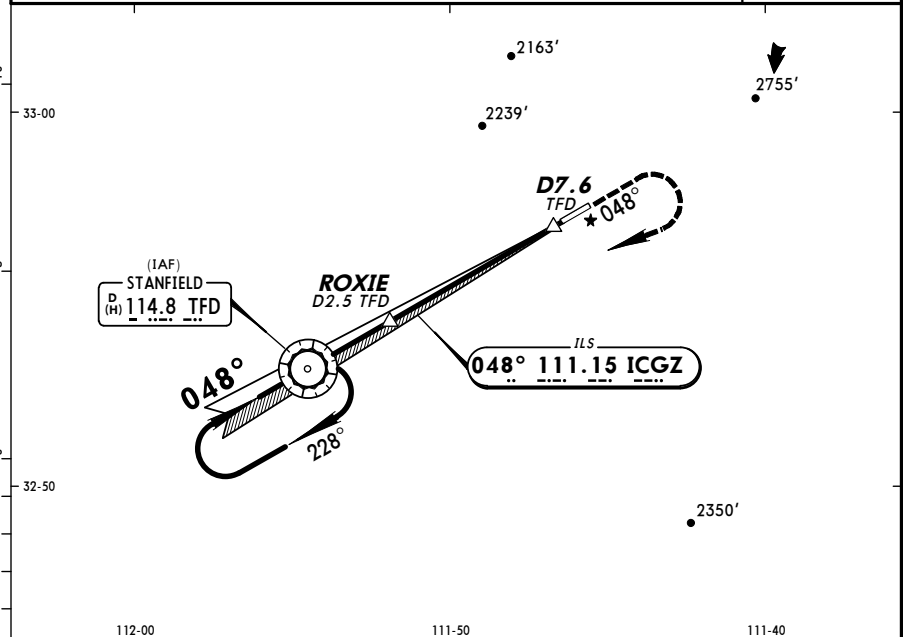
KCGZ/CGZ **JEPPESEN** **CASA GRANDE, ARIZ**
CASA GRANDE MUN 20 AUG 10 (11-1) **CAT A & B** **ILS or LOC DME Rwy 5**

AWOS-3 132.17	ALBUQUERQUE Center (R) 125.4	PRESCOTT Radio 122.1G 114.8T	CASA GRANDE MUN UNICOM CTAF 122.7
LOC ICGZ 111.15	Final Apch Crs 048°	GS ROXIE 3200' (1742')	ILS DA(H) 1743' (285')
Apt Elev 1464'			TDZE 1458'

MISSED APCH: Climb to 2100' via TFD VOR R-048 then climbing RIGHT turn to 3500' direct to TFD VOR and hold.

Alt Set: INCHES Trans level: FL 180 Trans alt: 18000'

1. DME from TFD VOR; simultaneous reception of ICGZ LOC and TFD DME required.
 2. Autocoupled approach not authorized below 1650'. 3. Visibility reduction by helicopters not authorized. 4. Pilot controlled lighting 122.7.



Gnd speed-Kts	70	90	100	120	140	160					
Descent angle [3.00°]	377	484	538	646	753	861					
MAP at D7.6 TFD											

MAP at D7.6 TFD

ILS	LOC (GS out)
DA(H) 1743' (285')	MDA(H) 1840' (382')
FULL	RAIL or ALS out
RAIL out	ALS out
Max Kts	MDA(H)
90	1900' (436')-1
120	1920' (456')-1
C	NA
D	NA

TERPS - AMEND 6C - 28 AUG 2010

For Training Use Only

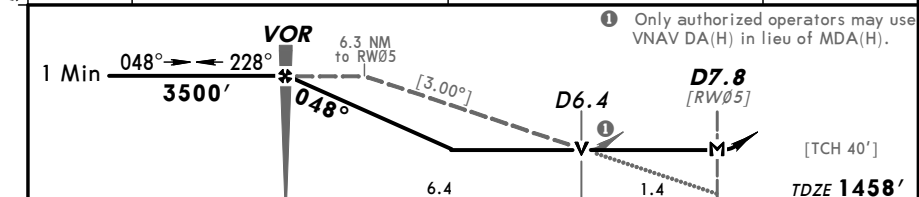
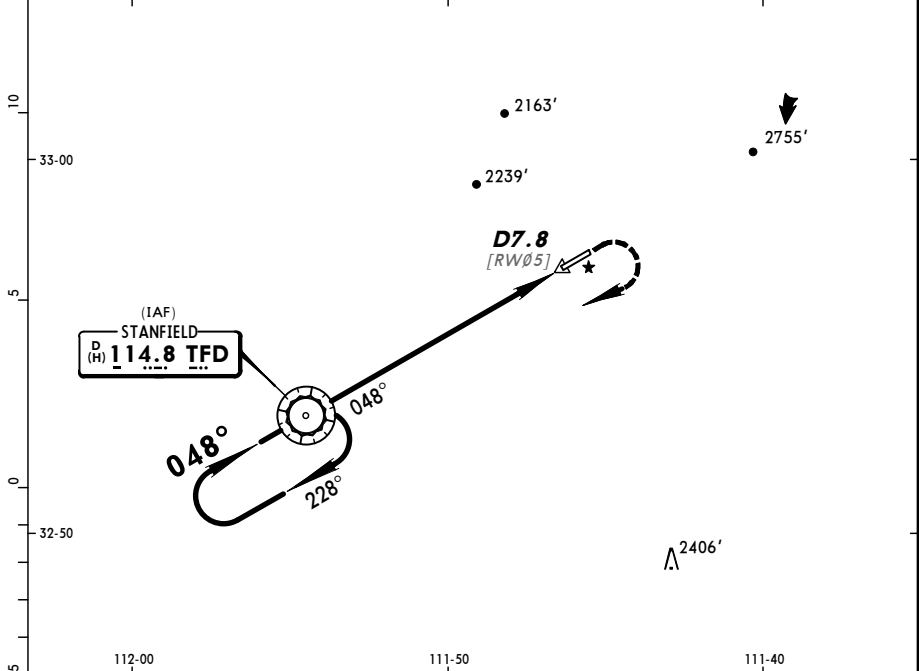
KCGZ/CGZ **JEPPESEN** **CASA GRANDE, ARIZ**
CASA GRANDE MUN 22 APR 05 (13-1) **VOR Rwy 5**

AWOS-3 132.17	ALBUQUERQUE Center (R) 125.4	PRESCOTT Radio 122.1G 114.8T	CASA GRANDE MUN UNICOM CTAF 122.7
VOR TFD 114.8	Final Apch Crs 048°	Minimum Alt VOR 3500' (2042')	MDA(H) 1960' (502')
Apt Elev 1464'			TDZE 1458'

MISSED APCH: Climb to 2200', then climbing RIGHT turn to 3500' direct TFD VOR and hold.

Alt Set: INCHES Trans level: FL 180 Trans alt: 18000'

1. Pilot controlled lighting 122.7.



Gnd speed-Kts	70	90	100	120	140	160					
Descent angle [3.00°]	372	478	531	637	743	849					
MAP at D7.8 or VOR to MAP	7.8	6:41	5:12	4:41	3:54	3:21	2:56				

MAP at D7.8 or VOR to MAP

STRAIGHT-IN LANDING RWY 5	CIRCLE-TO-LAND
MDA(H) 1960' (502')	
RAIL out	ALS out
Max Kts	MDA(H)
90	1960' (496')-1
120	1960' (496')-1
C	NA
D	NA

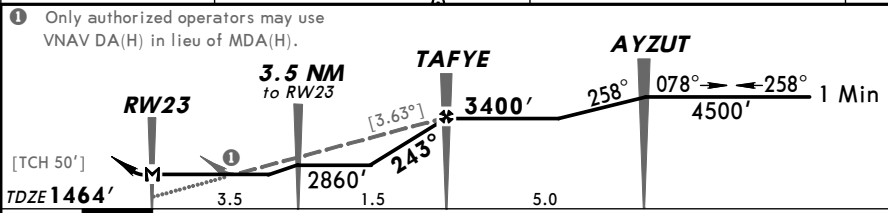
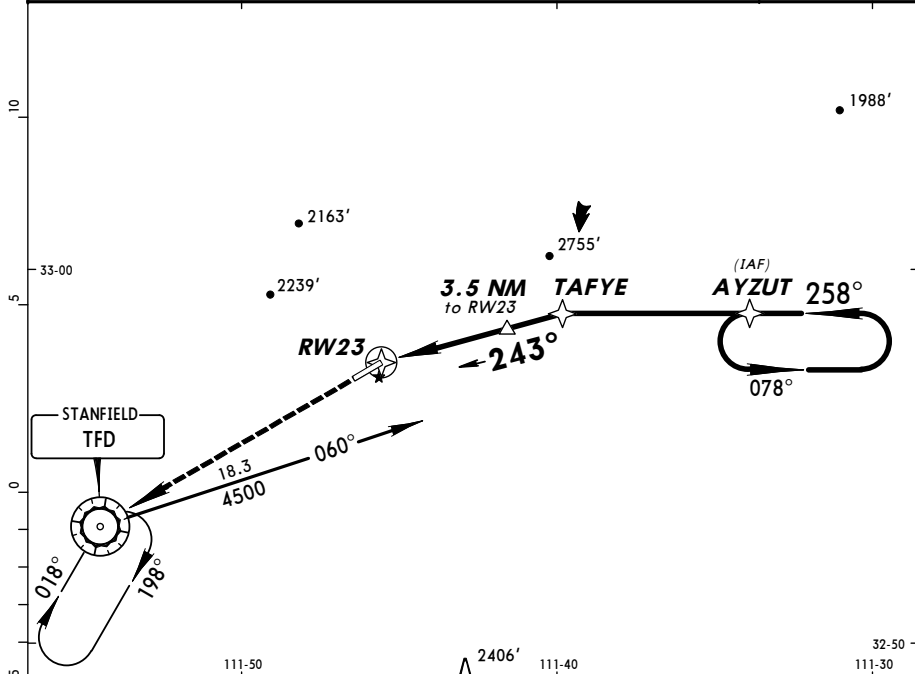
TERPS - AMEND 6C - 28 AUG 2010

KCGZ/CGZ
 CASA GRANDE MUN

JEPPESEN
 22 APR 05 (18-2)

CASA GRANDE, ARIZ
 GPS Rwy 23

AWOS-3 132.17	ALBUQUERQUE Center (R) 125.4	PRESCOTT Radio 122.1G 114.8T	CASA GRANDE MUN UNICOM CTAF 122.7
GPS	Final Apch Crs 243°	Minimum Alt TAFYE 3400' (1936')	MDA(H) 1840' (376') Apt Elev 1464' TDZE 1464'
MISSED APCH: Climb to 5600' direct TFD VOR and hold.			5700'
Alt Set: INCHES		Trans level: FL 180	Trans alt: 18000'
1. Pilot controlled lighting 122.7.			MSA RW23



Gnd speed-Kts	70	90	100	120	140	160				
Descent angle [3.63°]	450	578	642	771	899	1028		VASI-L	5600'	TFD VOR
MAP at RW23										

STRAIGHT-IN LANDING RWY 23		CIRCLE-TO-LAND	
MDA(H) 1840' (376')			
A	1	Max Kts	MDA(H)
B		90	1840' (376')-1
C	NA	120	1980' (516')-1
D		C	NA
		D	NA

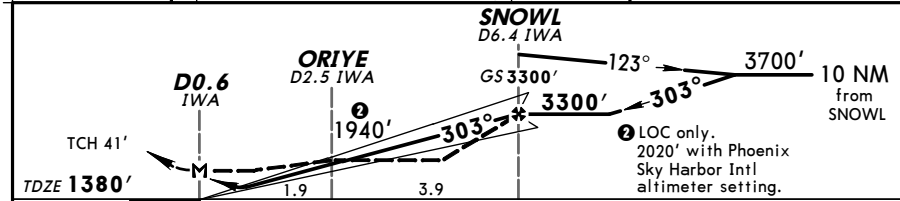
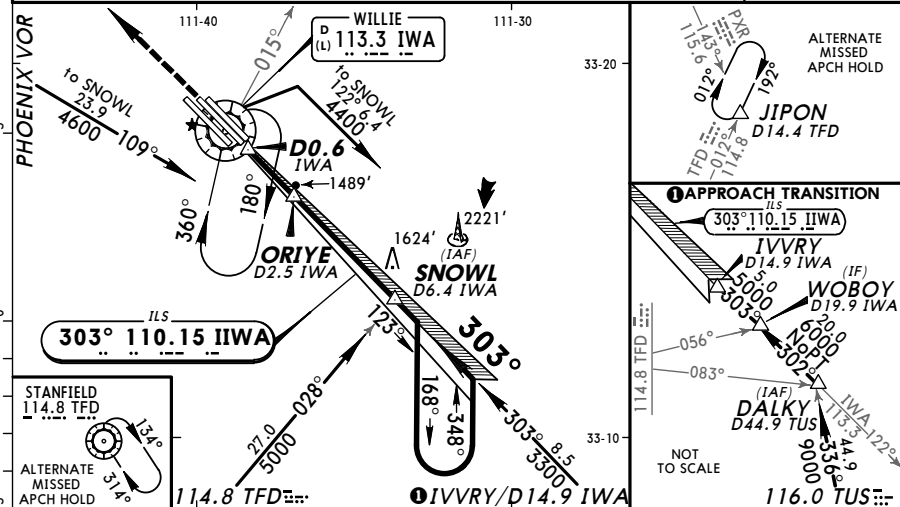
For Training Use Only

KIWA/AZA
-MESA GATEWAY

JEPPESEN
 19 FEB 10 (41-1)

PHOENIX, ARIZ
ILS or LOC Rwy 30C

ATIS (AWOS-3 when Twr inop) 133.5		PHOENIX Approach (R) 124.9		*GATEWAY Tower West CTAF 120.6 East 124.75 Helicopter 118.8		*Ground 128.25
LOC IIWA 110.15	Final Apc Crs 303°	GS SNOWL 3300' (1920')	ILS DA(H) (CONDITIONAL) 1580' (200')	Apt Elev 1382'		
Alt Set: INCHES Trans level: FL 180 Trans alt: 18000' 1. Use local altimeter setting; if not received, use Phoenix Sky Harbor Intl altimeter setting. 2. LOC unusable beyond 25° left of course. 3. VGS1 and ILS glidepath not coincident.						



Gnd speed-Kts	70	90	100	120	140	160	PAPI-L	2800'	5000'	145°	IWA 113.3
GS	3.00°	377	484	538	646	753					
MAP at D0.6 IWA or SNOWL to MAP	5.8	4:58	3:52	3:29	2:54	2:29	2:10				

STRAIGHT-IN LANDING RWY 30C With Local Altimeter Setting			CIRCLE-TO-LAND With Local Altimeter Setting			
A	ILS DA(H) 1580' (200')	MDA(H) 1800' (420') With ORIYE	MDA(H) 1940' (560') Without ORIYE	With ORIYE		Without ORIYE
				Max Kts	MDA(H)	MDA(H)
B	3/4	1	1	90	1800' (418') -1	1940' (558') -1
C				120	1840' (458') -1	1940' (558') -1
D				140	1840' (458') -1 1/2	1940' (558') -1 1/2
D		1 1/4	1 3/4	165	1940' (558') -2	1940' (558') -2

With Phoenix Sky Harbor Intl Altimeter Setting			With Phoenix Sky Harbor Intl Altimeter Setting			
A	ILS DA(H) 1660' (280')	MDA(H) 1880' (500') With ORIYE	MDA(H) 2020' (640') Without ORIYE	With ORIYE		Without ORIYE
				Max Kts	MDA(H)	MDA(H)
B	1	1 1/4	1 1/4	90	1880' (498') -1 1/4	2020' (638') -1 1/4
C				120	1920' (538') -1 1/4	2020' (638') -1 1/4
D				140	1920' (538') -1 3/4	2020' (638') -1 3/4
D		1 1/2	2	165	2020' (638') -2	2020' (638') -2

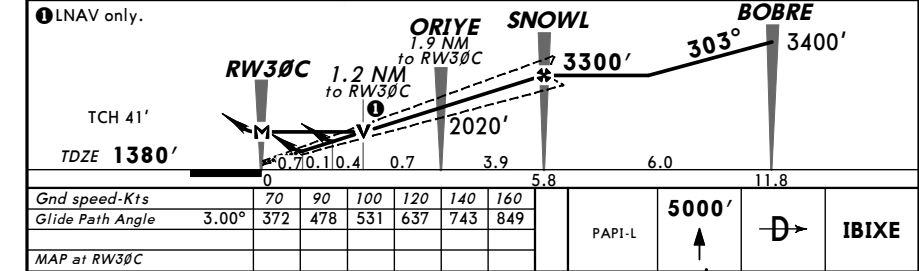
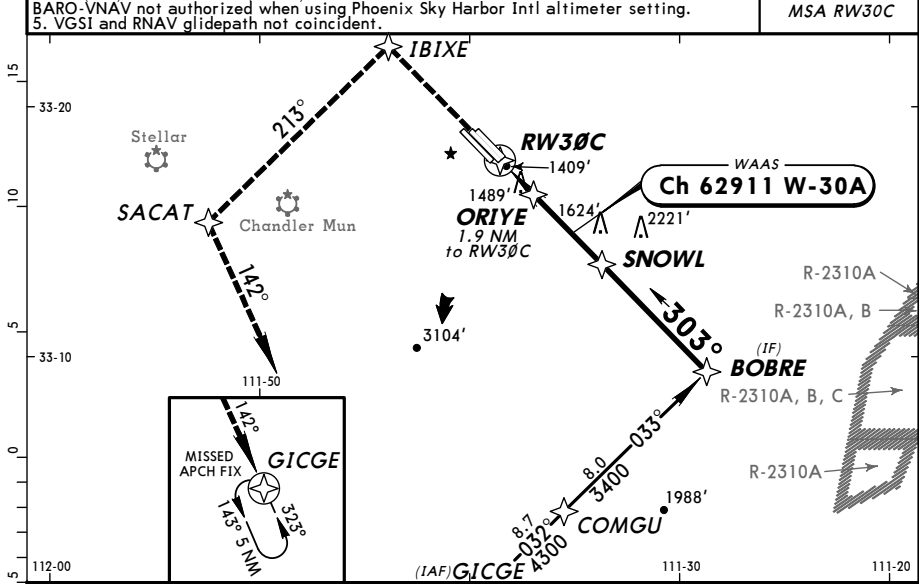
CHANGES: None. © JEPPESEN, 1999, 2010. ALL RIGHTS RESERVED.

KIWA/AZA
-MESA GATEWAY

JEPPESEN
 6 MAR 09 (42-4) Eff 12 Mar

PHOENIX, ARIZ
RNAV (GPS) Rwy 30C

ATIS (AWOS-3 when Twr inop) 133.5		PHOENIX Approach (R) 124.9		*GATEWAY Tower West CTAF 120.6 East 124.75 Helicopter 118.80		*Ground 128.25
WAAS Ch 62911 W-30A	Final Apc Crs 303°	Minimum Alt SNOWL 3300' (1920')	LPV DA(H) (CONDITIONAL) 1630' (250')	Apt Elev 1382'		
Alt Set: INCHES Trans level: FL 180 Trans alt: 18000' 1. Use local altimeter setting; if not received, use Phoenix Sky Harbor Intl altimeter setting. 2. For uncompensated BARO-VNAV systems, LNAV/VNAV not authorized below -17°C (2°F) or above 46°C (114°F). 3. DME/DME RNP-0.3 not authorized. 4. VDP and BARO-VNAV not authorized when using Phoenix Sky Harbor Intl altimeter setting. 5. VGS1 and RNAV glidepath not coincident.						



Gnd speed-Kts	70	90	100	120	140	160	PAPI-L	5000'	IBIXE
Glide Path Angle	3.00°	372	478	531	637	743			
MAP at RW30C	5.8	4:58	3:52	3:29	2:54	2:29	2:10		

STRAIGHT-IN LANDING RWY 30C With Local Altimeter Setting			CIRCLE-TO-LAND With Local Altimeter Setting			
A	LPV DA(H) 1630' (250')	LNAV/VNAV DA(H) 1680' (300')	LNAV MDA(H) 1800' (420')	With ORIYE		Without ORIYE
				Max Kts	MDA(H)	MDA(H)
B	1	1	1	90	1800' (418') -1	1940' (558') -1
C				120	1840' (458') -1	1940' (558') -1
D				140	1840' (458') -1 1/2	1940' (558') -1 1/2
D		1 1/4	1 3/4	165	1940' (558') -2	1940' (558') -2

CHANGES: New procedure. © JEPPESEN, 2009. ALL RIGHTS RESERVED.

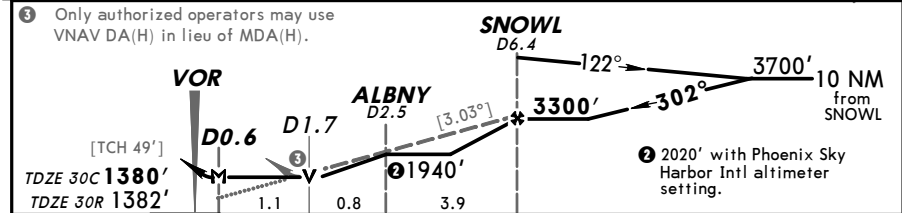
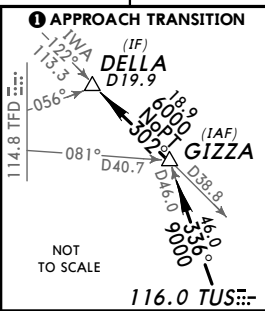
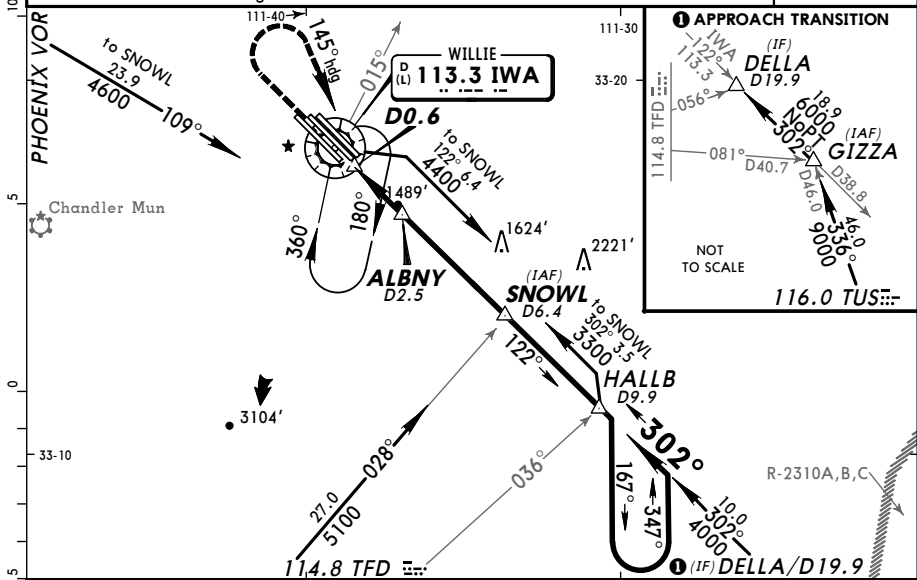
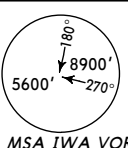
For Training Use Only

KIWA/AZA
-MESA GATEWAY

JEPPESEN
 6 MAR 09 (43-1) Eff 12 Mar

PHOENIX, ARIZ
VOR Rwy 30C

ATIS (AWOS-3 when Twr inop) 133.5		PHOENIX Approach (R) 124.9		*GATEWAY Tower West CTAF 120.6		*GATEWAY Tower East Helicopter 118.80		*Ground 128.25	
VOR IWA 113.3	Final Apch Crs 302°	Minimum Alt SNOWL 3300' (1920')	MDA(H) (CONDITIONAL) 1800' (420')		Apt Elev 1382'		TDZE 30C 1380'		
MISSED APCH: Climb to 2800' then climbing RIGHT turn to 5000' via 145° heading and IWA VOR R-015° to IWA VOR and hold, continue climb-in-hold to 5000'. Alt Set: INCHES Trans level: FL 180 Trans alt: 18000' 1. RADAR required. 2. Use local altimeter setting; if not received, use Phoenix Sky Harbor Intl altimeter setting.									
MSA IWA VOR									



Gnd speed-Kts	70	90	100	120	140	160	PAPI-L	2800'	5000'	145°	IWA
Descent angle [3.03°]	375	482	536	643	750	858		↑	RT	via	hdg
MAP at D0.6 or SNOWL to MAP	5.8	4:58	3:52	3:29	2:54	2:29	2:10				113.3

	STRAIGHT-IN LANDING RWY 30C With Local Altimeter Setting				SIDESTEP LANDING RWY 30R With Local Altimeter Setting				CIRCLE-TO-LAND With Local Altimeter Setting					
	MDA(H) With DME	MDA(H) Without DME	MDA(H) With DME	MDA(H) Without DME	MDA(H) With DME	MDA(H) Without DME	MDA(H) With DME	MDA(H) Without DME	Max Kts	With DME MDA(H)	Without DME MDA(H)	Max Kts	With DME MDA(H)	Without DME MDA(H)
A	1800'(420')	1940'(560')	1800'(418')	1940'(558')	1800'(418')	1940'(558')	1800'(418')	1940'(558')	90	1800'(418')-1	1940'(558')-1	90	1800'(418')-1	1940'(558')-1
B	1	1	1	1	1	1	1	1	120	1840'(458')-1	1940'(558')-1	120	1840'(458')-1	1940'(558')-1
C	1 1/4	1 1/2	1 1/2	1 1/2	1 1/4	1 1/2	1 1/4	1 1/2	140	1840'(458')-1 1/2	1940'(558')-1 1/2	140	1840'(458')-1 1/2	1940'(558')-1 1/2
D	1 3/4	2	2	2	1 3/4	2	1 3/4	2	165	1940'(558')-2	1940'(558')-2	165	1940'(558')-2	1940'(558')-2
	With Phoenix Sky Harbor Intl Altimeter Setting				With Phoenix Sky Harbor Intl Altimeter Setting				With Phoenix Sky Harbor Intl Altimeter Setting					
	MDA(H) With DME	MDA(H) Without DME	MDA(H) With DME	MDA(H) Without DME	MDA(H) With DME	MDA(H) Without DME	MDA(H) With DME	MDA(H) Without DME	Max Kts	With DME MDA(H)	Without DME MDA(H)	Max Kts	With DME MDA(H)	Without DME MDA(H)
A	1880'(500')	2020'(640')	1880'(498')	2020'(638')	1880'(498')	2020'(638')	1880'(498')	2020'(638')	90	1880'(498')-1 1/4	2020'(638')-1 1/4	90	1880'(498')-1 1/4	2020'(638')-1 1/4
B	1 1/4	1 1/4	1 1/4	1 1/4	1 1/4	1 1/4	1 1/4	1 1/4	120	1920'(538')-1 1/4	2020'(638')-1 1/4	120	1920'(538')-1 1/4	2020'(638')-1 1/4
C	1 1/2	1 3/4	1 3/4	1 3/4	1 1/2	1 3/4	1 1/2	1 3/4	140	1920'(538')-1 3/4	2020'(638')-1 3/4	140	1920'(538')-1 3/4	2020'(638')-1 3/4
D	2	2	2 1/4	2 1/4	2	2 1/4	2	2 1/4	165	2020'(638')-2	2020'(638')-2	165	2020'(638')-2	2020'(638')-2

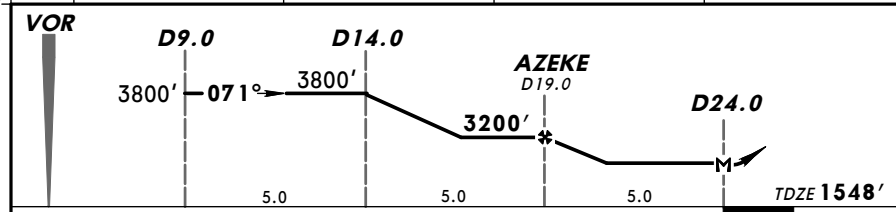
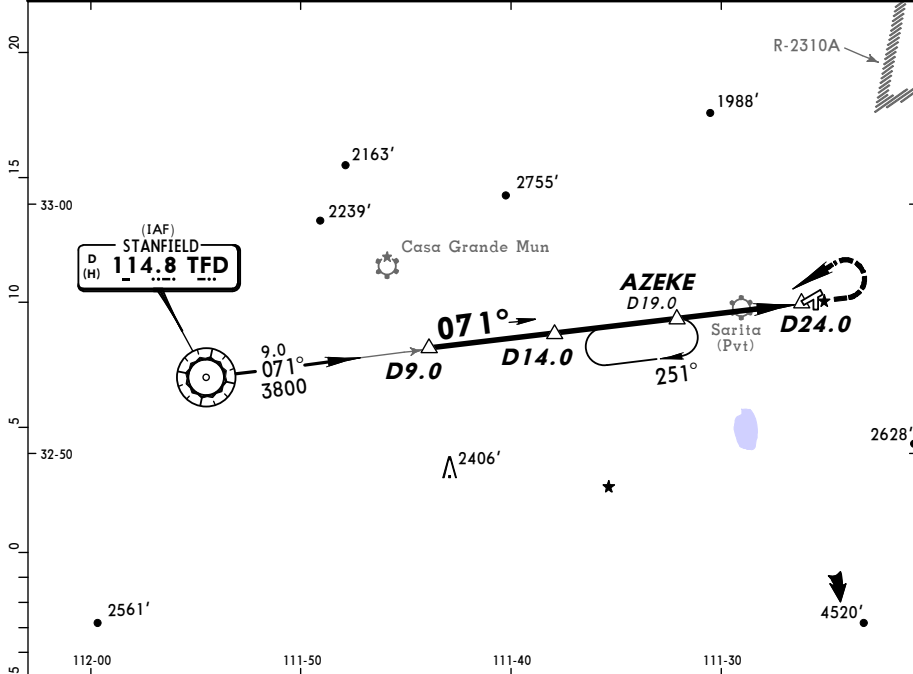
For Training Use Only

P08
 COOLIDGE MUN

JEPPESEN
 22 APR 05 (13-1)

COOLIDGE, ARIZ
 VOR DME Rwy 5

ALBUQUERQUE Center				COOLIDGE MUN UNICOM			
125.4				CTAF 123.07			
VOR TFD 114.8	Final Apch Crs 071°	Minimum Alt AZEKE 3200' (1652')	MDA(H) 2000' (452')	Apt Elev 1574'		5700'	
MISSED APCH: Climb to 2300' then climbing LEFT turn to 3500' inbound via TFD VOR R-071 to AZEKE /D19.0 and hold.				TDZE 1548'			
Alt Set: INCHES		Trans level: FL 180		Trans alt: 18000'		MSA TFD VOR	
1. Use Casa Grande Mun altimeter setting. 2. Pilot controlled lighting 123.07.							



MAP at D24.0				VASI-L	2300'	3500'	TFD via 114.8	AZEKE
					↑	LT	R-071	

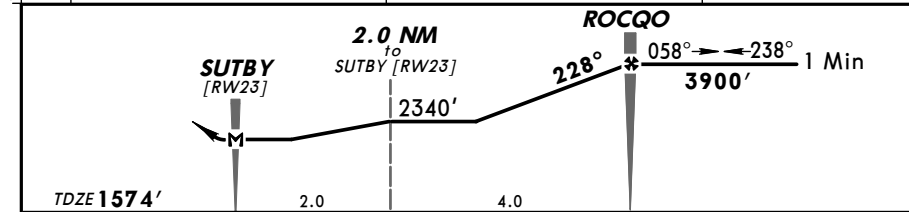
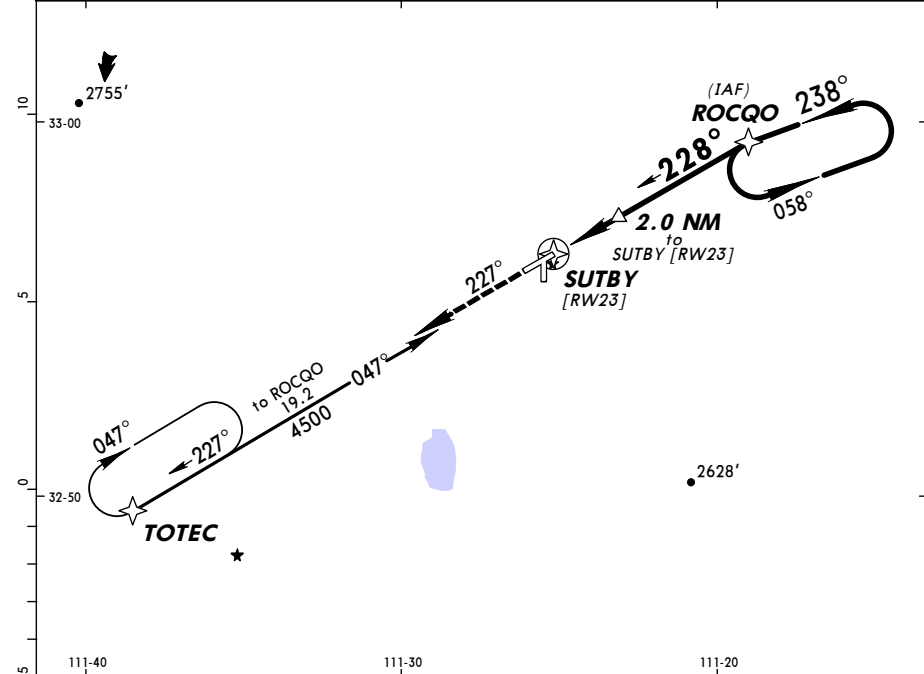
STRAIGHT-IN LANDING RWY 5				CIRCLE-TO-LAND			
MDA(H) 2000' (452')							
Max Kts				Max Kts			
A	1			90	2100' (526')-1		
B	1 1/4			120	2100' (526')-1 1/4		
C	NA			C	NA		
D	NA			D	NA		

P08
 COOLIDGE MUN

JEPPESEN
 22 APR 05 (18-1)

COOLIDGE, ARIZ
 GPS Rwy 23

ALBUQUERQUE Center				COOLIDGE MUN UNICOM			
125.4				CTAF 123.07			
GPS	Final Apch Crs 228°	Minimum Alt ROCQO 3900' (2326')	MDA(H) 2060' (486')	Apt Elev 1574'		6700'	
MISSED APCH: Climb to 3900' via 227° course to TOTEC and hold.				TDZE 1574'			
Alt Set: INCHES		Trans level: FL 180		Trans alt: 18000'		MSA SUTBY [RW23]	
1. Use Casa Grande Mun altimeter setting. 2. Pilot controlled lighting 123.07.							



MAP at SUTBY [RW23]				VASI-L	3900'	via 227°	TOTEC
					↑		

STRAIGHT-IN LANDING RWY 23				CIRCLE-TO-LAND			
MDA(H) 2060' (486')							
Max Kts				Max Kts			
A	1			90	2100' (526')-1		
B	NA			120	NA		
C	NA			C	NA		
D	NA			D	NA		

For Training Use Only