

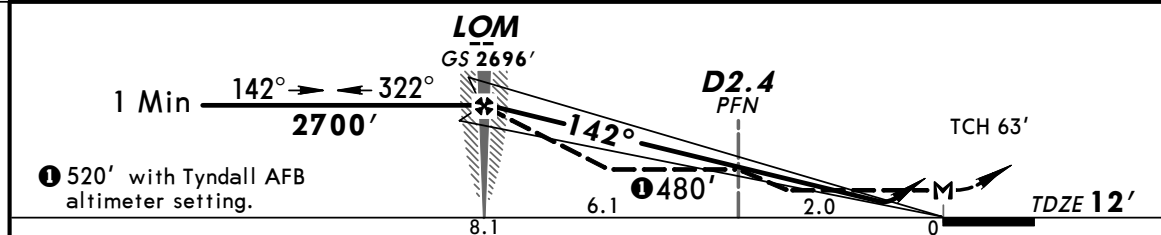
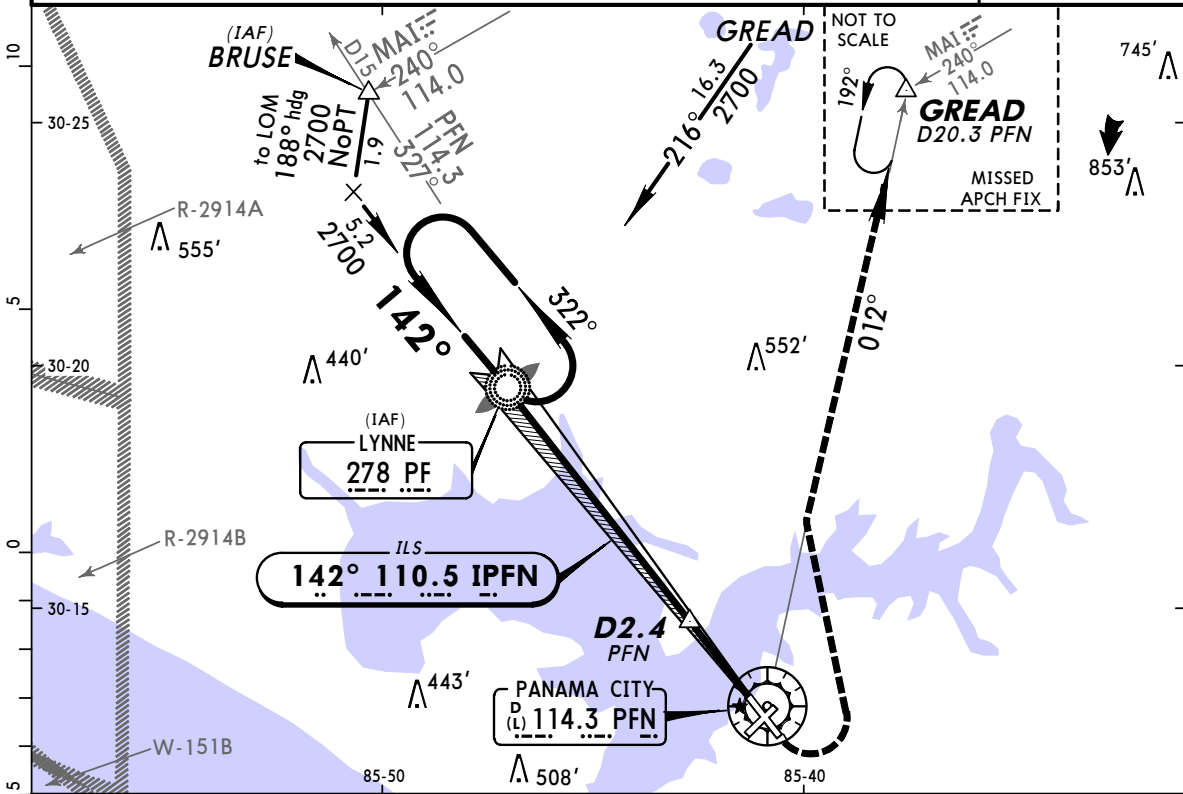
**KPFN/PFN**  
**-BAY CO INTL**

**JEPPESEN**

**PANAMA CITY, FLA**  
**ILS Rwy 14**

27 JUL 07 **(11-1)** Eff 2 Aug

BRIEFING STRIP™	ATIS (ASOS when Twr inop.) <b>119.97</b>	North Below 5000' <b>119.1</b>	*TYNDALL Approach (R) Above 5000' <b>125.2</b>	South Below 5000' <b>125.2</b>	Above 5000' <b>124.15</b>	JAX Center <b>119.1</b> when App inop.	*PANAMA CITY Tower CTAF <b>120.5</b>	*Ground <b>121.65</b>
	LOC IPFN <b>110.5</b>	Final Apch Crs <b>142°</b>	GS LOM <b>2696'</b> (2684')	ILS DA(H) (CONDITIONAL) <b>212'</b> (200')	Apt Elev <b>20'</b>	TDZE <b>12'</b>		
	<b>MISSED APCH:</b> Climb to 500' then climbing LEFT turn to 2700' outbound via PFN VOR R-012 to GREAD INT/D20.3 PFN and hold.							2600' MSA PF LOM
Alt Set: INCHES Trans level: FL 180 Trans alt: 18000' 1. Use local altimeter setting; if not received, use Tyndall AFB altimeter setting. 2. Pilot controlled lighting 120.5.								



Gnd speed-Kts	70	90	100	120	140	160	MALSR	500'	2700'	via 114.3 PFN R-012	GREAD	
GS	3.00°	377	484	538	646	753						861
LOM to MAP	8.1	6:57	5:24	4:52	4:03	3:28						3:02

TERPS	STRAIGHT-IN LANDING RWY 14							CIRCLE-TO-LAND			
	ILS			LOC (GS out)				With Local Altimeter Setting			
	With D2.4 PFN			Without D2.4 PFN				Max Kts			
	With Local Altimeter Setting			With Tyndall AFB Altimeter Setting				90	480'(460')-1		
	DA(H) 212'(200')			MDA(H) 360'(348')		MDA(H) 480'(468')		120	520'(500')-1		
	DA(H) 252'(240')			MDA(H) 400'(388')		MDA(H) 520'(508')		140	520'(500')-1 1/2		
	FULL	RAIL or ALS out		RAIL out	ALS out	RAIL out	ALS out	165	640'(620')-2		
A								Max Kts	With Tyndall AFB Altimeter Setting		
B								90	520'(500')-1		
C	1/2	3/4	1/2	3/4	1	1/2	3/4	1	120	560'(540')-1	
D			3/4	1 1/4	1	1 1/2			140	560'(540')-1 1/2	
									165	680'(660')-2	

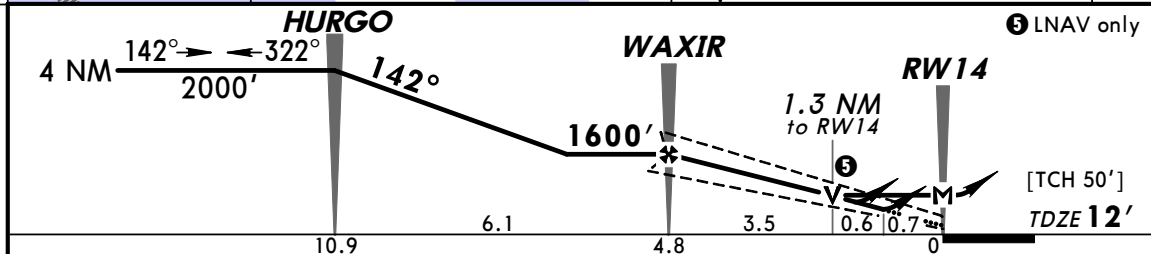
FOR TRAINING PURPOSES ONLY

**KPFN/PFN**  
**-BAY CO INTL**

**JEPPESEN**  
9 FEB 07 **(12-2)**

**PANAMA CITY, FLA**  
**RNAV (GPS) Rwy 14**

BRIEFING STRIP™	ATIS (ASOS when Twr inop) <b>119.97</b>	*TYNDALL Approach (R) North Below 5000' <b>119.1</b> Above 5000' <b>125.2</b>		South Below 5000' <b>125.2</b> Above 5000' <b>124.15</b>	JAX Center <b>119.1</b> when App inop.	*PANAMA CITY Tower <b>CTAF 120.5</b>	*Ground <b>121.65</b>
	WAAS <b>Ch 50116</b> <b>W-14A</b>	Final Apch Crs <b>142°</b>	Minimum Alt <b>WAXIR</b> <b>1600' (1588')</b>	LPV DA(H) (CONDITIONAL) <b>270' (258')</b>	Apt Elev <b>20'</b> TDZE <b>12'</b>	TAA 30 NM IAF	
<b>MISSED APCH:</b> Climb to 2100' direct CAGMU, then via 078° track to JAKRO, then via 003° track to CAPAM and hold.							
Alt Set: INCHES Trans level: FL 180 Trans alt: 18000' 1. Use local altimeter setting; if not received, use Tyndall AFB altimeter setting. 2. VDP and Baro-VNAV not authorized when using Tyndall AFB altimeter setting. 3. Baro VNAV not authorized below -15°C (5°F). 4. DME/DME RNP-0.3 not authorized. 5. Pilot controlled lighting 120.5.							



Gnd speed-Kts	70	90	100	120	140	160	MALSR	2100'	D	CAGMU
Glide Path Angle 3.00°	372	478	531	637	743	849				
MAP at RW14										

TERPS	STRAIGHT-IN LANDING RWY 14						CIRCLE-TO-LAND			
	LPV		LNAV/VNAV		LNAV		With Local Altimeter Setting		With Tyndall AFB Altimeter Setting	
	FULL	RAIL out	RAIL out	ALS out	RAIL out	ALS out	Max Kts	MDA(H)	MDA(H)	
A							90	480'(460')-1	520'(500')-1	
B							120	580'(560')-1	620'(600')-1	
C	1/2	3/4	1/2	3/4	1	1	140	580'(560')-1 1/2	620'(600')-1 1/2	
D			3/4	1	1	1 1/2	165	640'(620')-2	680'(660')-2	

1 DA(H) 290'(278') with Tyndall AFB altimeter setting. 2 DA(H) 360'(348') with Tyndall AFB altimeter setting. 3 MDA(H) 520'(508') with Tyndall AFB altimeter setting.

CHANGES: TYNDALL Approach frequency.

© JEPPESEN SANDERSON, INC., 2001, 2007. ALL RIGHTS RESERVED.

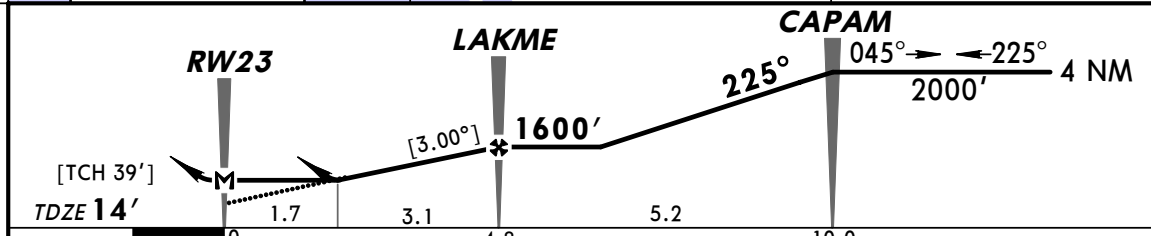
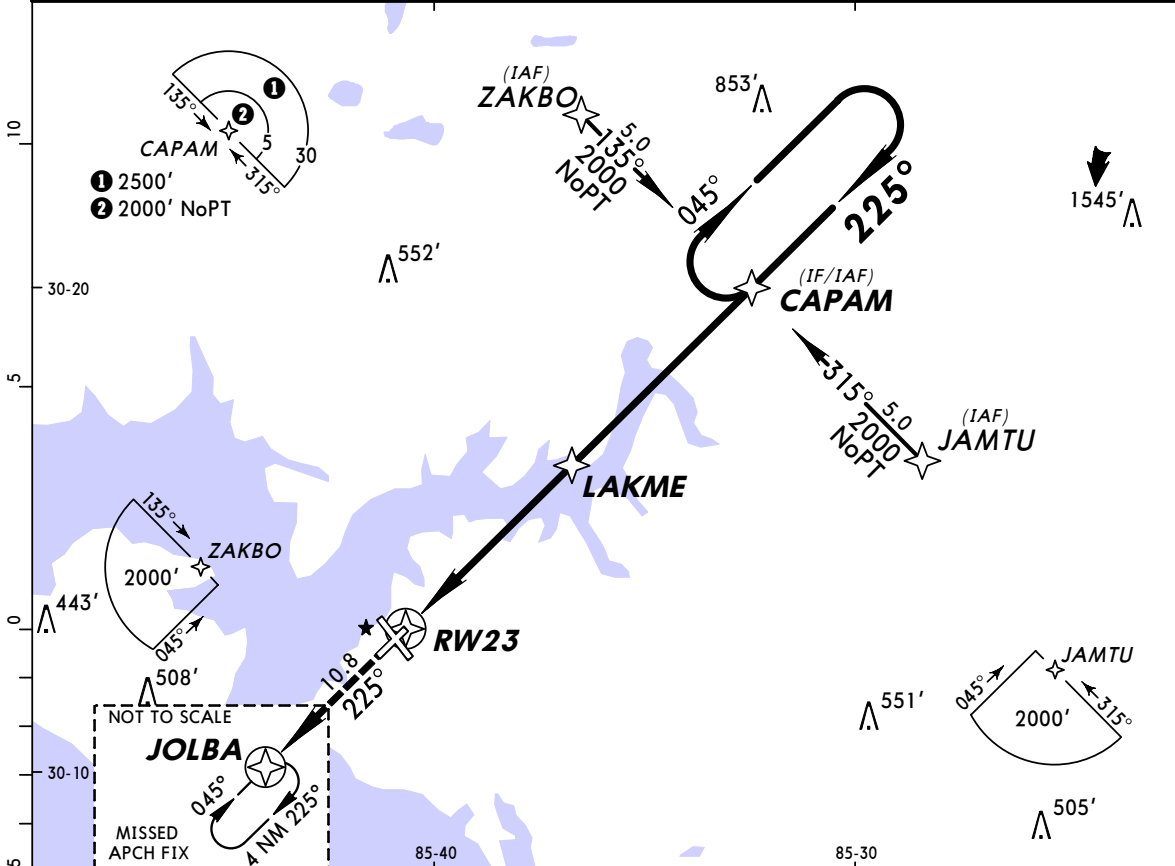
FOR TRAINING PURPOSES ONLY

**KPFN/PFN**  
**-BAY CO INTL**

**JEPPESEN**  
9 FEB 07 **(12-3)**

**PANAMA CITY, FLA**  
**RNAV (GPS) Rwy 23**

BRIEFING STRIP™	ATIS (ASOS when Twr inop)	*TYNDALL Approach (R)		JAX Center	*PANAMA CITY Tower	*Ground
	119.97	North Below 5000' 119.1	South Above 5000' 125.2 124.15	119.1 when App inop.	CTAF 120.5	121.65
	RNAV	Final Apch Crs <b>225°</b>	Minimum Alt <b>LAKME</b> 1600' (1586')	LNAV/VNAV DA(H) (CONDITIONAL) <b>600' (586')</b>	Apt Elev 20' TDZE 14'	
MISSED APCH: Climb to 2000' via 225° course to JOLBA and hold.						TAA 30 NM IAF
Alt Set: INCHES Trans level: FL 180 Trans alt: 18000' 1. Use local altimeter setting, if not received, use Tyndall AFB altimeter setting. 2. When local altimeter setting not received Baro-VNAV not authorized. 3. Baro-VNAV not authorized below -15°C (5°F). 4. GPS or RNP-0.3 required. 5. DME/DME RNP-0.3 not authorized. 6. Pilot controlled lighting 120.5.						



Gnd speed-Kts	70	90	100	120	140	160		
Descent angle [3.00°]	372	478	531	637	743	849		
MAP at RW23								

Vertical Path: 2000' VASI-L via 225° JOLBA

TERPS	STRAIGHT-IN LANDING RWY 23				CIRCLE-TO-LAND	
	LNAV/VNAV		LNAV		With Local Altimeter Setting	With Tyndall AFB Altimeter Setting
	DA(H) <b>600' (586')</b> With Local Altimeter Setting	DA(H) <b>640' (626')</b> With Tyndall AFB Altimeter Setting	MDA(H) <b>600' (586')</b> With Local Altimeter Setting	MDA(H) <b>640' (626')</b> With Tyndall AFB Altimeter Setting	Max Kts MDA(H)	MDA(H)
A			1	1	90	
B					120	600'(580')-2 640'(620')-2
C	2	2	1½	1½	140	
D			1¾	1¾	165	640'(620')-2 680'(660')-2

FOR TRAINING PURPOSES ONLY







