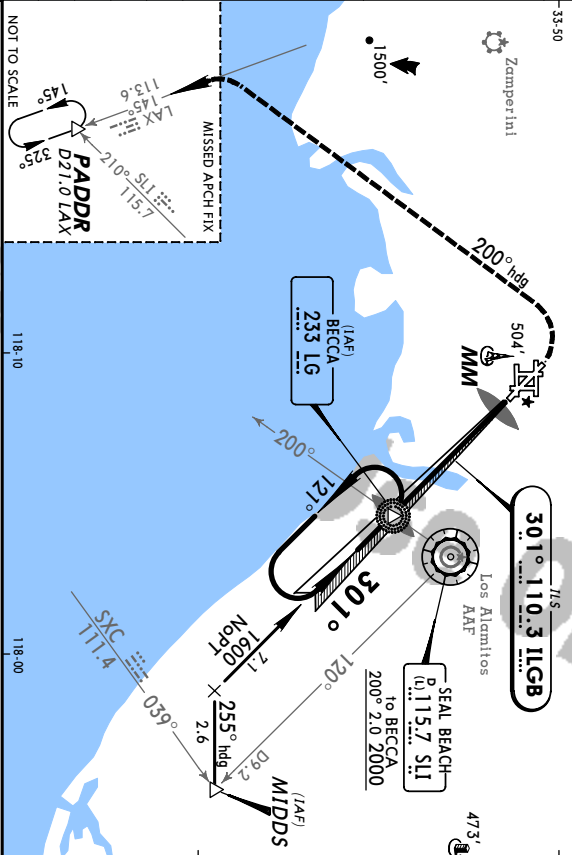


KLGB LONG BEACH **JEPPesen** **LONG BEACH, CALIF**
ILS Rwy 30

*ATTIS (ASOS O/T)		SOCAL Approach (R)		*LONG BEACH Tower	
127.75	*Ground	124.65	Rwy 30 apch, Rwy 12 dep	CTAF 119.4	Rwy 12 apch, Rwy 30 dep
133.0	North & East of Rwy 12-30	135.8	South & West of Rwy 12-30	*Helicopter	
LOC	Final	GS	ILS	Apt Elev 58'	
ILGB	Apch Crs	BECCA	DA(H)	TDZE 35'	
110.3	301°	1573' (1558')	235' (200')		

MISSED ARCH: Climb to 800' then climbing LEFT turn to 2500' via 200° heading and outbound on LAX VOR R-145 to PADDR INT/ D21.0 LAX and hold.
 Pilot controlled lighting 119.4.

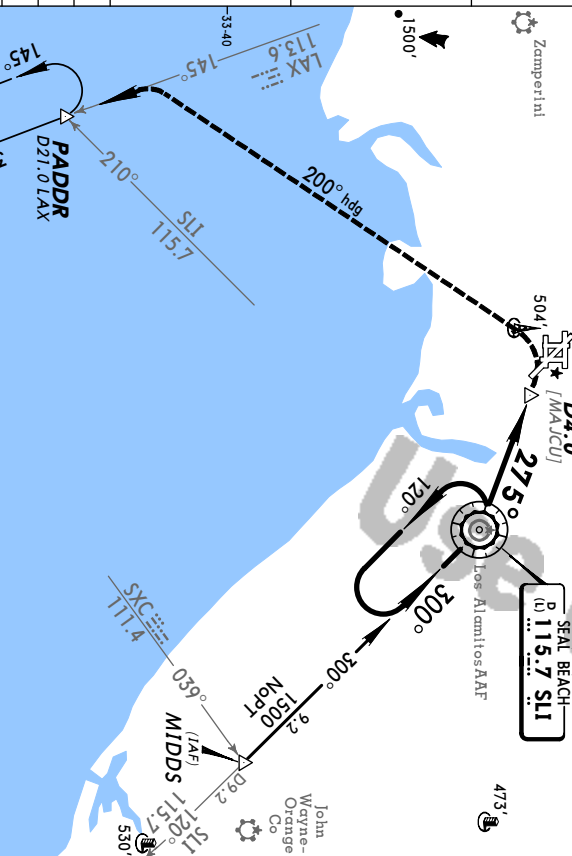


Gnd speed-Kts		70	90	100	120	140	160	MASSR	800'	2500'	LAX
Descent angle		3.00°	3/7'	4/85	5/38	6/46	7/54	8/61	via hdg		
MAP at D4.0 or VOR to MAP		4.0		3:26	2:40	2:24	2:00	1:43	R-145		

KLGB LONG BEACH **JEPPesen** **LONG BEACH, CALIF**
VOR Rwy 30

*ATTIS (ASOS O/T)		SOCAL Approach (R)		*LONG BEACH Tower	
127.75	*Ground	124.65	Rwy 30 apch, Rwy 12 dep	CTAF 119.4	Rwy 12 apch, Rwy 30 dep
133.0	North & East of Rwy 12-30	135.8	South & West of Rwy 12-30	*Helicopter	
VOR	Final	Mirritrum Alt	MDA(H)	Apt Elev 60'	
SII	Apch Crs	VOR	560' (522')	TDZE 38'	
115.7	275°	1500' (1462')			

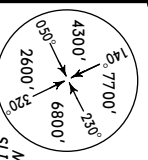
MISSED ARCH: Climbing LEFT turn to 2500' via 200° heading and outbound on LAX VOR R-145 to PADDR INT/D21.0 LAX and hold.
 Pilot controlled lighting 119.4.



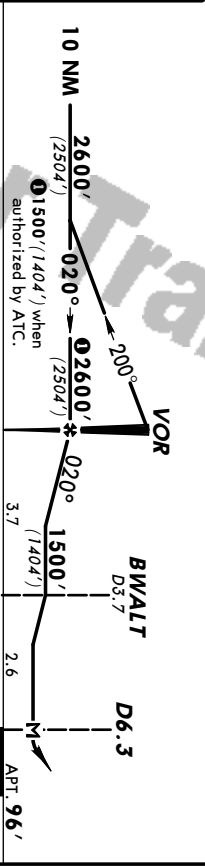
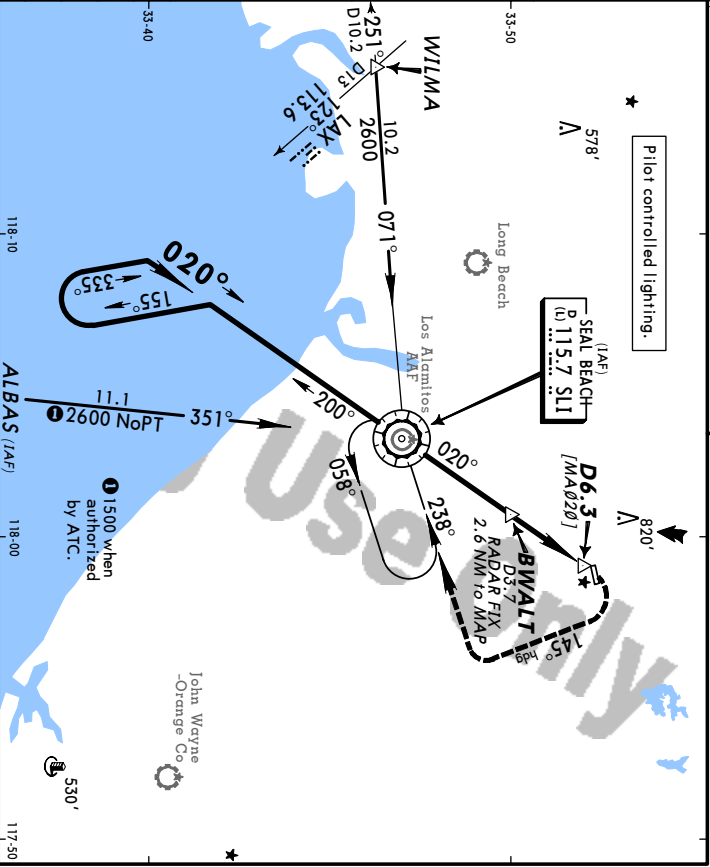
Gnd speed-Kts		70	90	100	120	140	160	MASSR	2500'	2000'
Descent angle		2.81°	3/48	4/47	4/97	5/96	6/96	7/95	via hdg	
MAP at D4.0 or VOR to MAP		4.0		3:26	2:40	2:24	2:00	1:43	R-145	

JEPPERSEN 26 MAR 99 (13-1)

ATIS **125.05**
 SOCIAL Approach (R) **124.65**
 *FULLERTON Tower CTA# **119.1**
 *Ground **121.8**



FULLERTON, CALIF
 FULLERTON MUN
VOR or GPS-A
 VOR **115.7 SLI**
 MSA
 SLI VOR
 KFUL Apt. Elev **96'**



MISSED APPROACH: Climbing **RIGHT** turn to **2600'** via **145°** heading and inbound on **SLI VOR R-058** to **SLI VOR** and hold.

CIRCLE-TO-LAND

Max Kts	With Bwalit						Without Bwalit					
	M04/H						M04/H					
A 90	700 (604) - 1						1500 (1404) - 1 1/4					
B 120	720 (624) - 1						1500 (1404) - 1 1/2					
C	NA						NA					
D	NA						NA					

Gnd speed-Kts	70	90	100	120	140	160
	MAP at D6.3 or	6.3	5.24	4.12	3.47	3.09
VOR to MAP	6.3	5.24	4.12	3.47	3.09	2.42

For Training Use Only