

**JEPPERSEN**

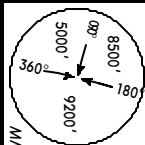
18 FEB 00 (3-1)

FIG 24 FcD

LOS ANGELES Center (R) 124.2

MESQUITE UNICOM CTAF 122.8

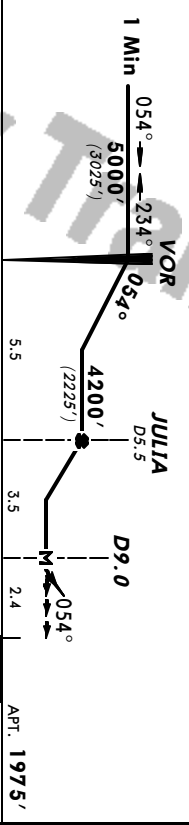
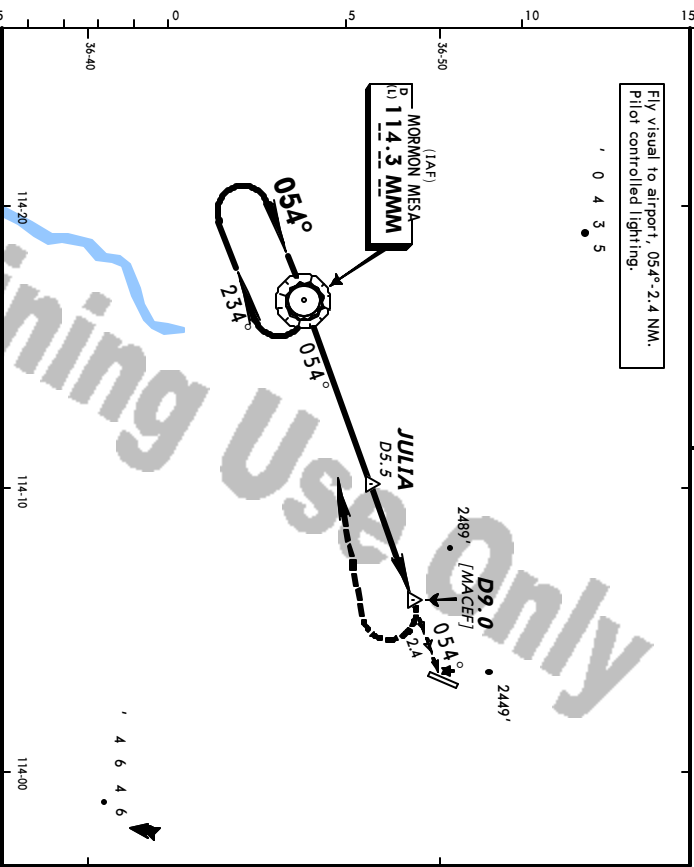
Obtain local altimeter setting on CTAF;  
 if not received, procedure not authorized.



**MESQUITE, NEW**  
 MESQUITE  
 VOR DME or GPS-A  
 VOR 114.3 MMM  
 MSA  
 MMM VOR  
 Apt. Elev 1975'

Fly visual to airport, 054°-2.4 NM.  
 Pilot controlled lighting.

0 4 3 5



**MISSED APPROACH: Climbing RIGHT turn to 5000' direct MMM VOR and hold.**

CIRCLE-TOLAND

[Max]  
Kts

MDA/H

A 90

3100' (1125')-2½

B 120

3100' (1125')-3

C 140

3100' (1125')-3

D 165

3100' (1125')-3

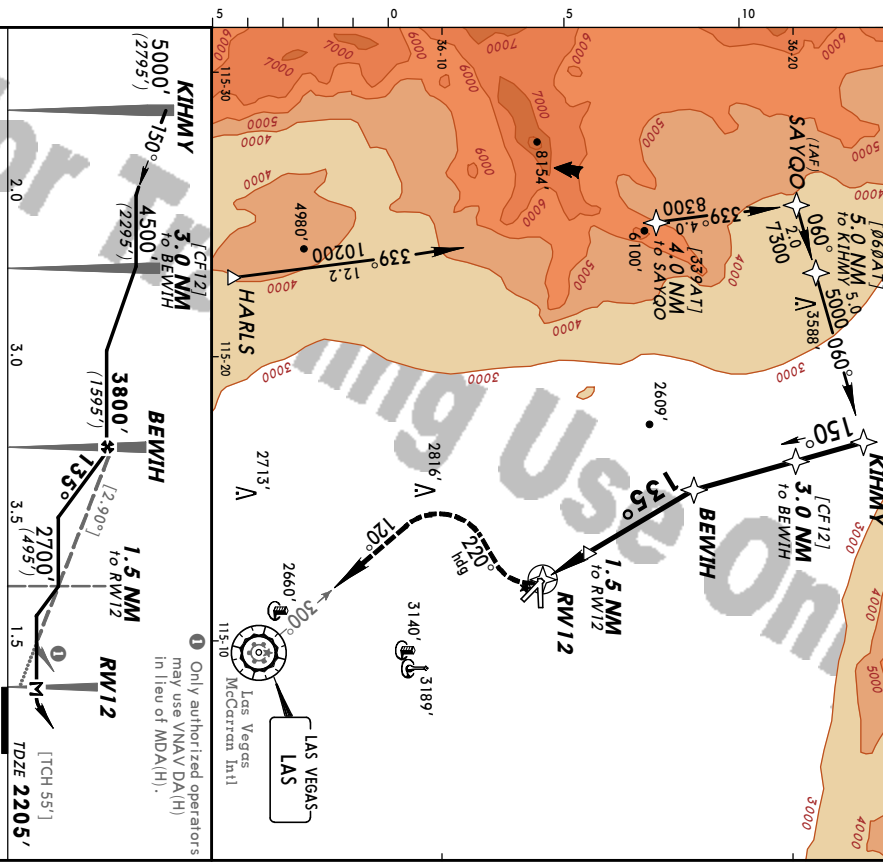
MAP at D9.0

For Training Use Only

**KVGT**  
 NORTH LAS VEGAS

16 MAR 01 **(28-1)**  
**JEPPesen**  
 LAS VEGAS, NEV  
 GPS Rwy 12

*ATIS	18.05	NELLS Approach	*NORTH LAS VEGAS Tower	*Ground	121.7
Final	18.05	Minimum Alt	MDA(H) (CONDITIONAL)	Apr Elev	2205'
Appch Crs	135°	BEW1H	2620' (415')	TDZE	2205'
MISSED APCH: Climbing RIGHT turn to 4000' via 220° heading and inbound on LAS VOR R-300 to LAS VOR. 1. Obtain local altimeter setting on CTAF; if not received, use McCarran Intl altimeter setting. 2. VGS1 and descent angles not coincident. 3. Pilot controlled lighting 125.7'.					
					13,000'
					M5A RW12

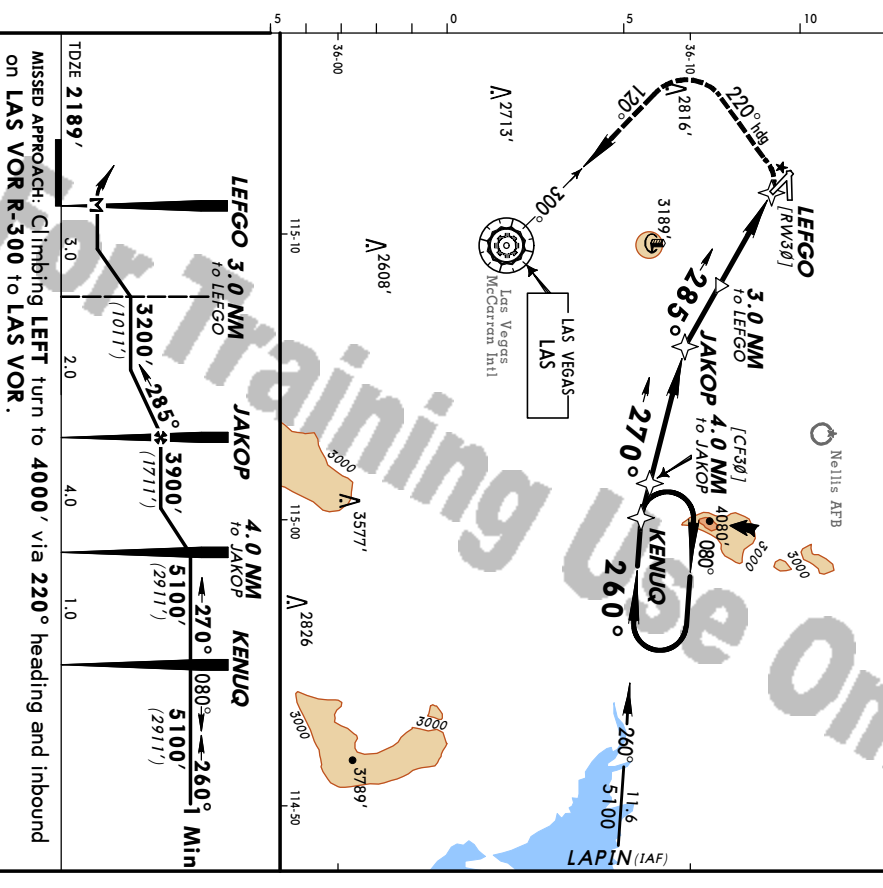


MAP at RW12	STRAIGHT-IN LANDING RWY 12						CIRCLE-TO-LAND					
	MDA(H) With local Altimeter Setting	2620' (415')	MDA(H) With McCarran Intl Altimeter Setting	2680' (475')	Max Altitude Setting	90	With local Altimeter Setting	2680' (475')-1	With McCarran Intl Altimeter Setting	2700' (495')-1	Max Altitude Setting	90
A	1	1	1	1	1	1	1	1	1	1	1	1
B	1	1	1	1	1	1	1	1	1	1	1	1
C	1 1/4	1 1/4	1 1/4	1 1/4	1 1/4	1 1/4	1 1/4	1 1/4	1 1/4	1 1/4	1 1/4	1 1/4
D	1 1/2	1 1/2	1 1/2	1 1/2	1 1/2	1 1/2	1 1/2	1 1/2	1 1/2	1 1/2	1 1/2	1 1/2

CHANGES: Straight-in minimums. © JEPPesen SANDERSON, INC., 2000, 2001. ALL RIGHTS RESERVED.

**JEPPesen**  
 1 NOV 96 **(28-2)**  
 LAS VEGAS, NEV  
 NORTH LAS VEGAS  
 GPS Rwy 30

*ATIS	118.05	NELLS Approach	*NORTH LAS VEGAS Tower	*Ground	121.7
Final	118.05	Minimum Alt	MDA(H) (CONDITIONAL)	Apr Elev	2205'
Appch Crs	135°	BEW1H	2620' (415')	TDZE	2205'
MISSED APCH: Climbing LEFT turn to 4000' via 220° heading and inbound on LAS VOR R-300 to LAS VOR. 1. Obtain local altimeter setting on CTAF; if not received, use McCarran Intl altimeter setting.					
					13,000'
					M5A LEFGO



MAP at LEFGO	STRAIGHT-IN LANDING RWY 30						CIRCLE-TO-LAND					
	MDA(H) With local Altimeter Setting	2680' (491')	MDA(H) With McCarran Intl Altimeter Setting	2700' (511')	Max Altitude Setting	90	With local Altimeter Setting	2720' (517')-1	With McCarran Intl Altimeter Setting	2740' (537')-1	Max Altitude Setting	90
A	1	1	1	1	1	1	1	1	1	1	1	1
B	1	1	1	1	1	1	1	1	1	1	1	1
C	1 1/4	1 1/4	1 1/4	1 1/4	1 1/4	1 1/4	1 1/4	1 1/4	1 1/4	1 1/4	1 1/4	1 1/4
D	1 1/2	1 1/2	1 1/2	1 1/2	1 1/2	1 1/2	1 1/2	1 1/2	1 1/2	1 1/2	1 1/2	1 1/2

CHANGES: Communications. © JEPPesen SANDERSON, INC., 1996. ALL RIGHTS RESERVED.

