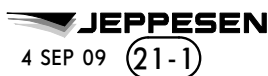
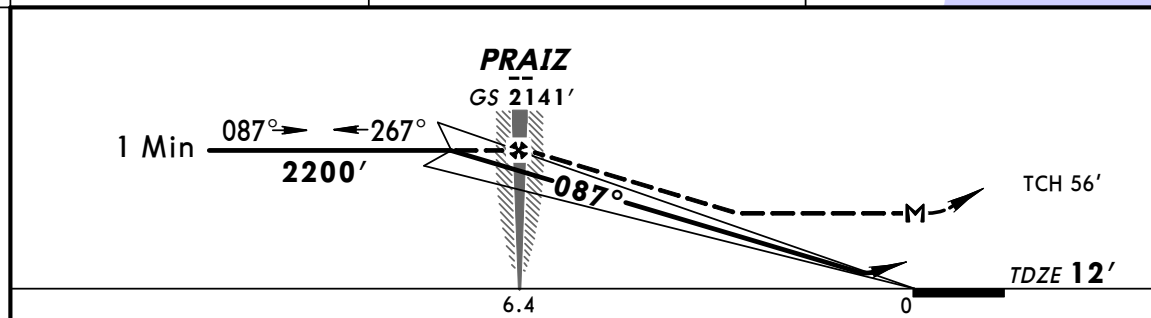
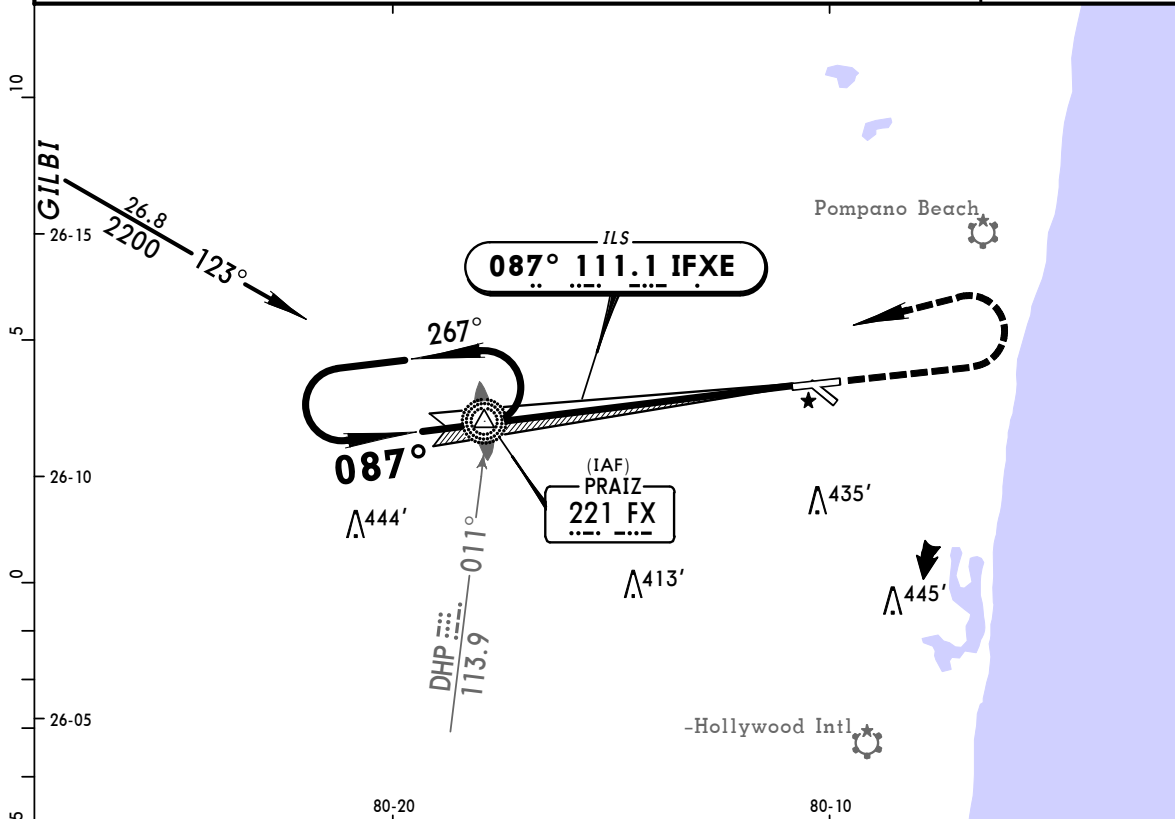


**KFXE/FXE**  
**FT LAUDERDALE EXECUTIVE**



**FT LAUDERDALE, FLA**  
**ILS or LOC Rwy 8**

ATIS <b>119.85</b>		MIAMI Approach (R) <b>119.7</b>		EXECUTIVE Tower <b>120.9</b>		Ground <b>121.75</b>		
LOC IFXE <b>111.1</b>	Final Apch Crs <b>087°</b>	GS PRAIZ <b>2141'</b> (2129')	ILS DA(H) <b>212'</b> (200')	Apt Elev 13' TDZE 12'				
MISSED APCH: Climb to 1000' then climbing LEFT turn to 2200' direct PRAIZ LOM/INT and hold.								
Alt Set: INCHES 1. ADF required.		Trans level: FL 180		Trans alt: 18000'				MSA FX LOM



Gnd speed-Kts	70	90	100	120	140	160	MALSR	1000'	2200'	FX
GS	3.00°	377	484	538	646	753	861	↑	← LT	221
PRAIZ to MAP 6.4	5:29	4:16	3:50	3:12	2:45	2:24				

TERPS	STRAIGHT-IN LANDING RWYs					Max Kts	CIRCLE-TO-LAND
	ILS		LOC (GS out)				
	DA(H) 212' (200')		MDA(H) 520' (508')				
	FULL	RAIL or ALS out	RAIL out	ALS out		MDA(H)	
A			1/2	3/4	1	90	580'(567')-1
B						120	
C	1/2	3/4				140	580'(567')-1 1/2
D			1	1 1/2		165	680'(667')-2

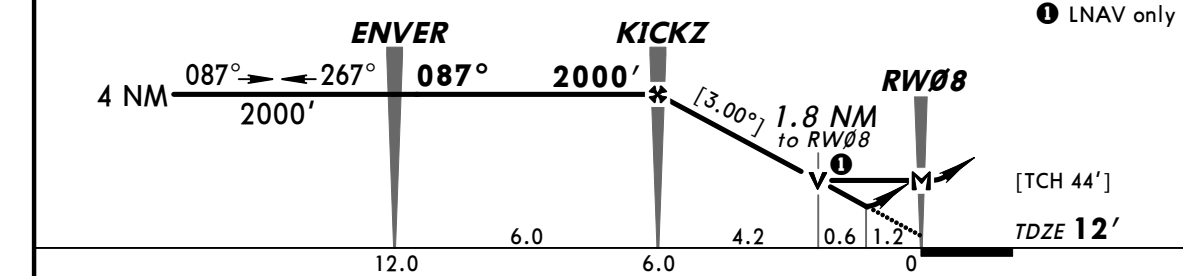
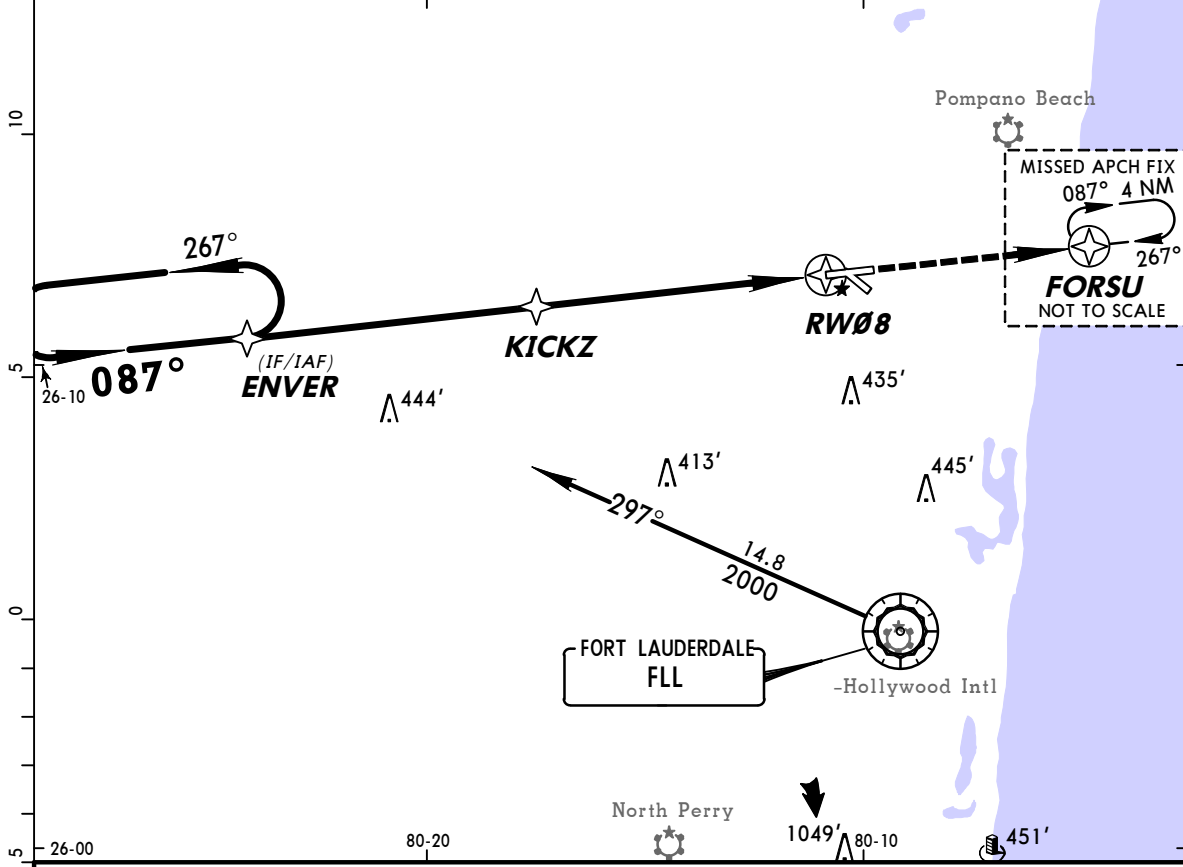
FOR TRAINING USE ONLY

**KFXE/FXE**  
**FT LAUDERDALE EXECUTIVE**

**JEPPESEN**  
 9 SEP 05 **(22-1)**

**FT LAUDERDALE, FLA**  
**RNAV (GPS) Rwy 8**

ATIS <b>119.85</b>		MIAMI Approach (R) <b>119.7</b>		EXECUTIVE Tower <b>120.9</b>		Ground <b>121.75</b>	
RNAV	Final Apch Crs <b>087°</b>	Minimum Alt <b>KICKZ</b> <b>2000' (1988')</b>	LNAV/VNAV DA(H) <b>440' (428')</b>	Apt Elev <b>13'</b> TDZE <b>12'</b>		<p>2600' MSA RW08</p>	
<b>MISSED APCH: Climb to 2000' direct FORSU and hold.</b> Alt Set: INCHES Trans level: FL 180 Trans alt: 18000' 1. Baro-VNAV not authorized below -15°C (5°F). 2. GPS or RNP-0.3 required. 3. DME/DME RNP-0.3 not authorized. 4. WAAS VNAV outages may occur daily. WAAS VNAV NOTAM service is not provided.							



Gnd speed-Kts	70	90	100	120	140	160	MALSR PAPI	2000'	D	FORSU
Descent angle [3.00°]	372	478	531	637	743	849				
MAP at RW08										

STRAIGHT-IN LANDING RWY 8						CIRCLE-TO-LAND	
LNAV/VNAV DA(H) 440' (428')			LNAV MDA(H) 640' (628')			Max Kts	MDA(H)
RAIL out	ALS out		RAIL out	ALS out			
A			1/2	3/4	1	90	640'(627')-1 1/2
B						120	
C	1	1 1/2	1 1/4	1 3/4		140	640'(627')-1 3/4
D			1 1/2	2		165	640'(627')-2

TERPS

FOR TRAINING USE ONLY

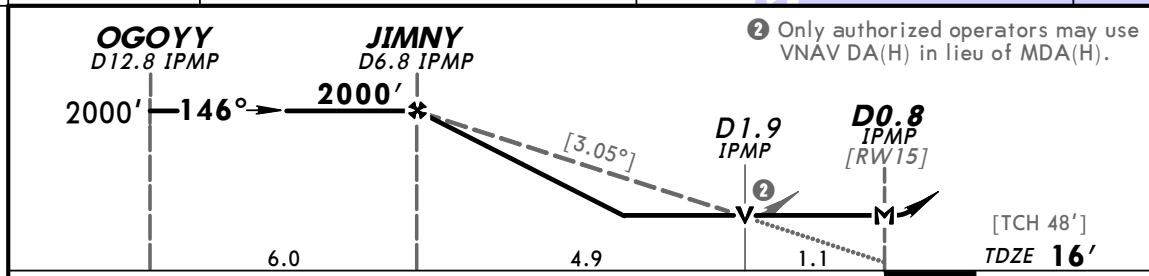
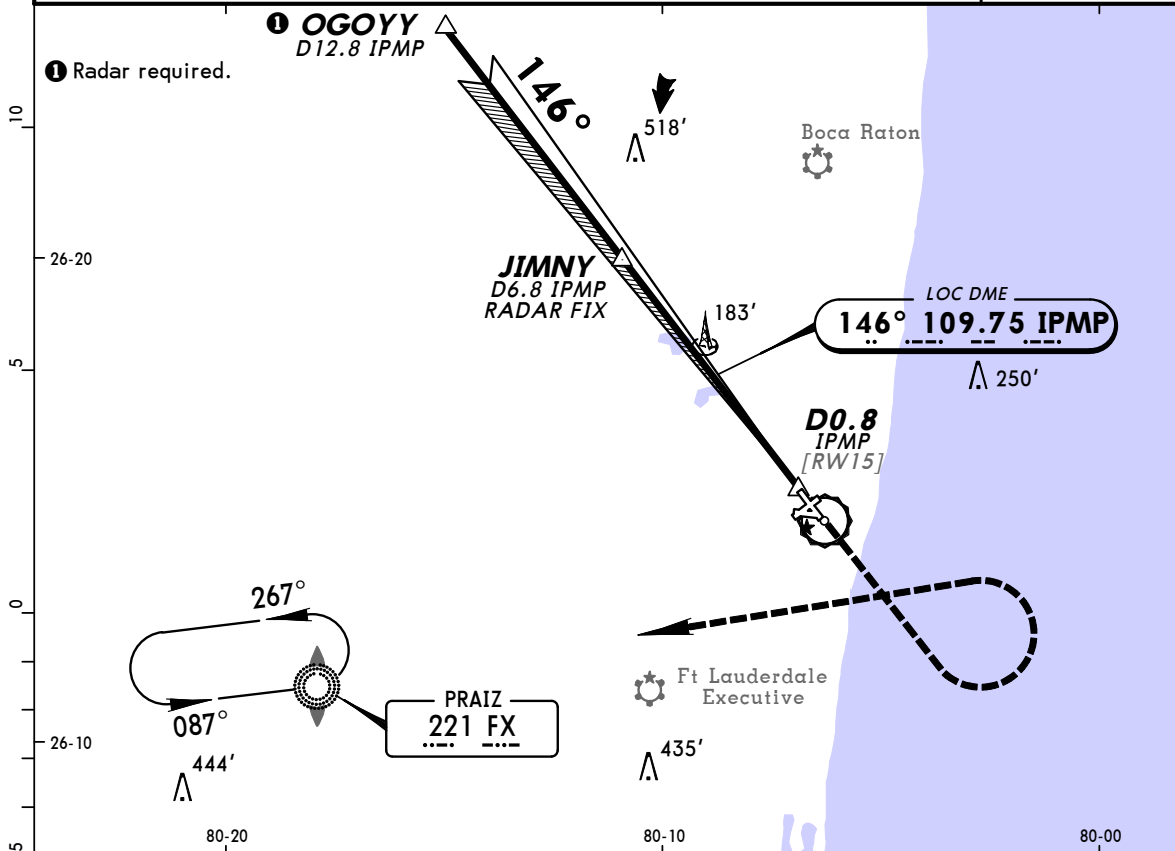


**KPMP/PPM**  
**POMPANO BEACH**

**JEPPESEN**  
 24 JUL 09 **(11-1)**

**POMPANO BEACH, FLA**  
**CAT A & B** **LOC Rwy 15**

ATIS (ASOS when Twr Inop) <b>120.55</b>		MIAMI Approach (R) <b>119.7</b>		*POMPANO BEACH Tower CTAF <b>125.4</b>		*Ground <b>121.9</b>	
LOC IPMP <b>109.75</b>		Final Apch Crs <b>146°</b>		Minimum Alt <b>JIMNY</b> <b>2000' (1984')</b>		MDA(H) <b>440' (424')</b>	
				Apt Elev <b>19'</b>		TDZE <b>16'</b>	
MISSED APCH: Climb to 1000' then climbing LEFT turn to 3000' direct FX LOM and hold.							
Alt Set: INCHES Trans level: FL 180 Trans alt: 18000'							
1. ADF and DME or Radar required. 2. VGSI and descent angles not coincident. 3. Use local altimeter setting; if not received, use Ft Lauderdale Executive altimeter setting.							



Gnd speed-Kts	70	90	100	120	140	160	ODALS	1000'	3000'	FX 221
Descent angle [3.05°]	378	486	540	648	755	863	PAPI	↑	← LT	→
MAP at D0.8 IPMP or JIMNY to MAP	6.0	5:09	4:00	3:36	3:00	2:34				

STRAIGHT-IN LANDING RWY 15			CIRCLE-TO-LAND		
MDA(H) <b>440' (424')</b>			MDA(H)		
ODALS out			Max Kts		
A	1		90	660' (641')-1	
B			120		
C	NA		C	NA	
D			D		

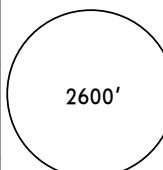
TERPS

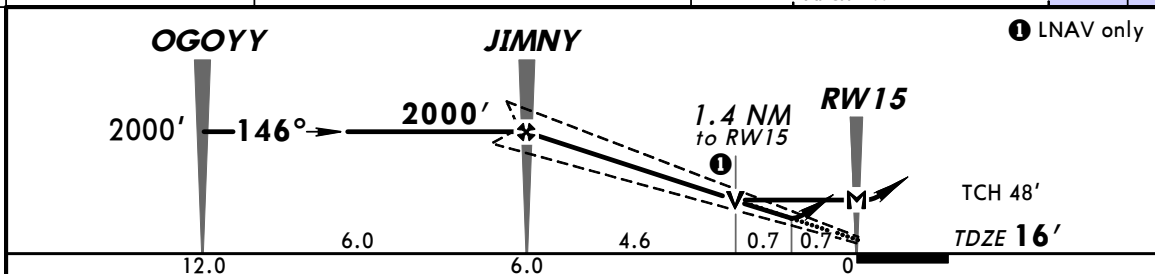
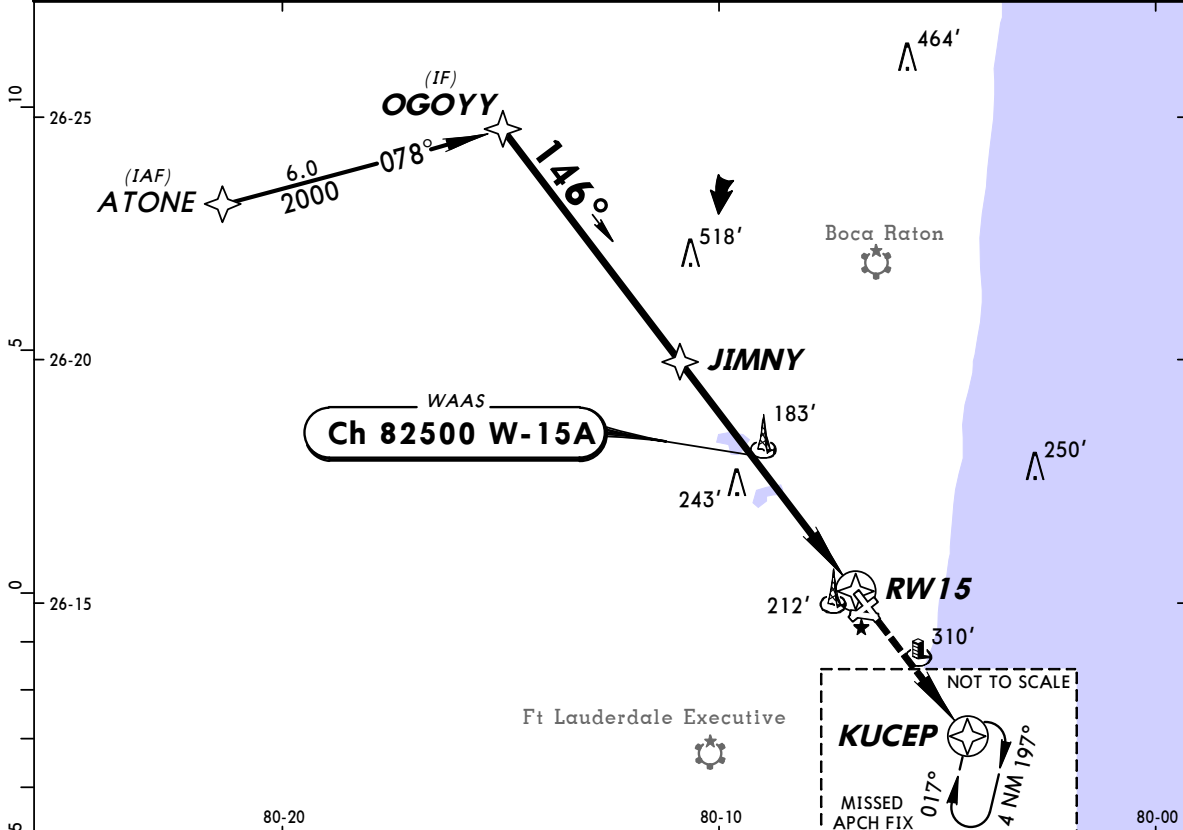
FOR TRAINING USE ONLY

**KPMP/PPM**  
**POMPANO BEACH**

**JEPPESEN**  
 7 SEP 07 **(12-2)**

**POMPANO BEACH, FLA**  
**RNAV (GPS) Rwy 15**

BRIEFING STRIP™	ATIS (ASOS when Twr Inop) <b>120.55</b>		MIAMI Approach (R) <b>119.7</b>		*POMPANO BEACH Tower <b>CTAF 125.4</b>		*Ground <b>121.9</b>	
	WAAS <b>Ch 82500</b> <b>W-15A</b>		Final Apch Crs <b>146°</b>		Minimum Alt <b>JIMNY</b> <b>2000'</b> (1984')		LPV DA(H) <b>295'</b> (279')	
							Apt Elev <b>19'</b> <b>TDZE 16'</b>	
MISSED APCH: Climb to 2000' direct KUCEP and hold. When authorized by ATC, climb-in-hold to 5000'.								2600'  MSA RW15
Alt Set: INCHES      Trans level: FL 180      Trans alt: 18000' 1. Use local altimeter setting; if not received, use Fort Lauderdale Executive altimeter setting. 2. DME/DME RNP-0.3 not authorized. 3. VGSI and RNAV glidepath not coincident. 4. WAAS VNAV outages may occur daily. WAAS VNAV NOTAM service is not provided.								



Gnd speed-Kts	70	90	100	120	140	160	ODALS PAPI	2000'	D	KUCEP
Glide Path Angle	3.00°	372	478	531	637	743				
MAP at RW15										

STRAIGHT-IN LANDING RWY 15				CIRCLE-TO-LAND	
LPV DA(H) <b>295'</b> (279')		RNAV MDA(H) <b>560'</b> (544')		Max Kts	
ODALS out		ODALS out		90	660' (641')-1
A	1	1		120	
B					
C	NA	NA		C	NA
D				D	

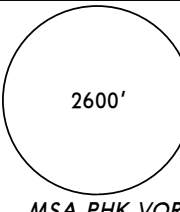
TERPS © 02/01/04

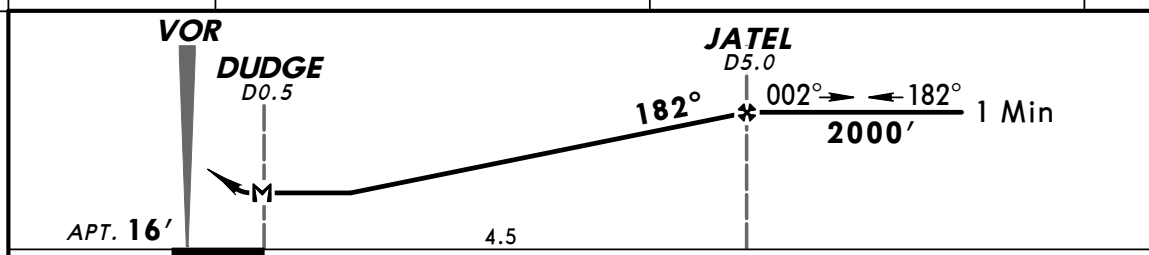
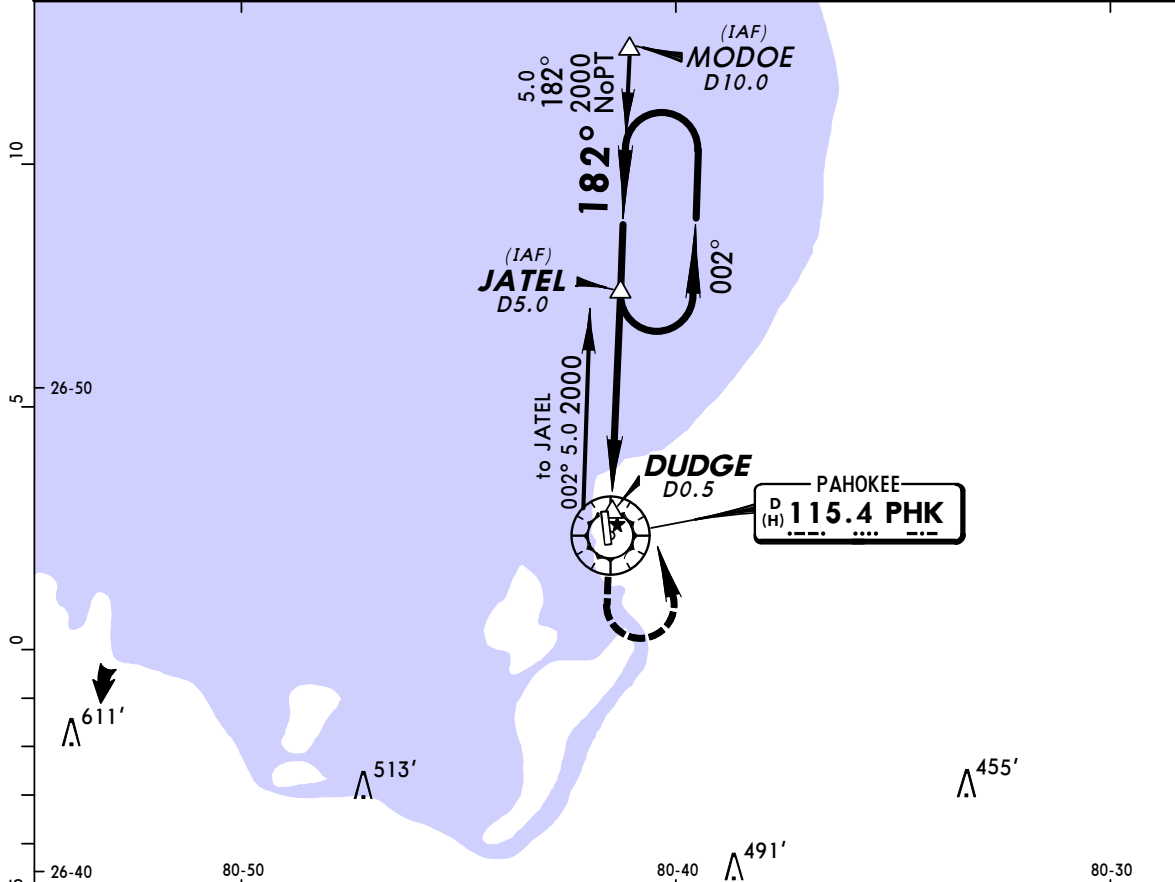
FOR TRAINING USE ONLY

**KPHK/PHK**  
**PALM BEACH CO GLADES**

**JEPPESEN**  
19 SEP 08 **(13-1)** **Eff 25 Sep**

**PAHOKEE, FLA**  
**VOR DME-A**

PALM BEACH INTL ASOS <b>119.97</b>		PALM BEACH Approach <b>124.6</b>		PALM BEACH CO GLADES UNICOM <b>CTAF 122.8</b>	
VOR PHK <b>115.4</b>	Final Apch Crs <b>182°</b>	Minimum Alt <b>JATEL</b> <b>2000' (1984')</b>	MDA(H) Refer to Minimums	Apt Elev <b>16'</b>	
<b>MISSED APCH: Climb to 1000', then climbing LEFT turn to 2000'</b> <b>outbound via PHK VOR R-002 to JATEL INT/D5.0 and hold.</b>					
Alt Set: INCHES      Trans level: FL 180      Trans alt: 18000' 1. Use Palm Beach Intl altimeter setting. 2. Pilot controlled lighting 122.8.					



MAP at DUDGE	Lighting - Refer to Airport Chart	1000'	2000'	PHK via 115.4 R-002	JATEL
--------------	-----------------------------------	-------	-------	---------------------	-------

		CIRCLE-TO-LAND	
	Max Kts	MDA(H)	
A	90	<b>580' (564') - 1</b>	
B	120	<b>580' (564') - 1 1/2</b>	
C	140	<b>580' (564') - 2</b>	
D	165	<b>580' (564') - 2</b>	

TERPS

**FOR TRAINING USE ONLY**