

**KBWG**  
 -WARREN CO REGL

**JEPPESSEN** 11 MAY 01 (1-1) **EFF 17 MAY**

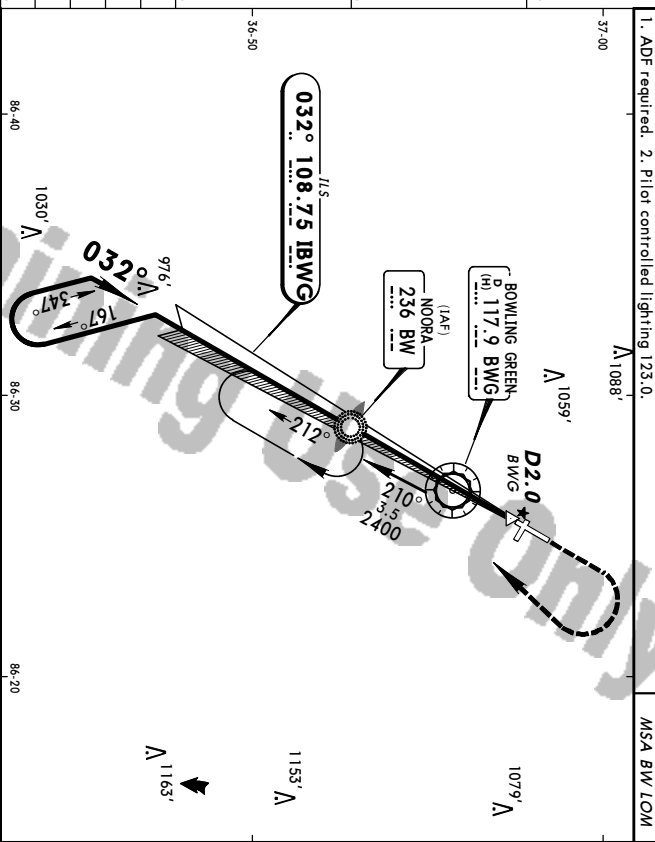
**BOWLING GREEN, KY**  
 ILS Rwy 3

ASOS	MEMPHIS Center (R)	BOWLING GREEN-WARREN CO REGL UNICOM	CIAF 123.0
LOC 127.82	Final	GS 133.85	ILS DA(H) 133.85
IBWG 108.75	Apch Crs 032°	LOM 2352 (1805')	Apri Elev 547'
		DA(H) 747' (200')	TDZE 547'

MISSED APCH: Climb to 2000' then climbing RIGHT turn to 2400' direct BW LOM and hold.

1. ADF required. 2. Pilot controlled lighting 123.0.

MSA BW LOM 3100'



GS	3.00°	377	484	538	646	753	861
MAP or D2.0 IBWG or							
LOM to MAP	5.4	4.38	3.36	3.14	2.42	2.19	2.02

STRAGHT-IN LANDING Rwy 3

ILS	DA(H) 747' (200')	LOC (GS out)	MDA(H) 960' (413')
-----	-------------------	--------------	--------------------

Max Kts	90	120	140	160
REL	2000'	2400'	2400'	2400'
PAPL	RT	RT	RT	RT
CIRCLE-TO-LAND				
BW				236

A	1	1000' (453')-1
B	120	1140' (593')-1
C	140	1140' (593')-1 1/2
D	165	1140' (593')-2

CHANGES: New chart format.

© JEPPESEN SANDERSON, INC., 2001. ALL RIGHTS RESERVED.

**KBWG**  
 -WARREN CO REGL

**JEPPESSEN** 29 MAR 02 (3-1)

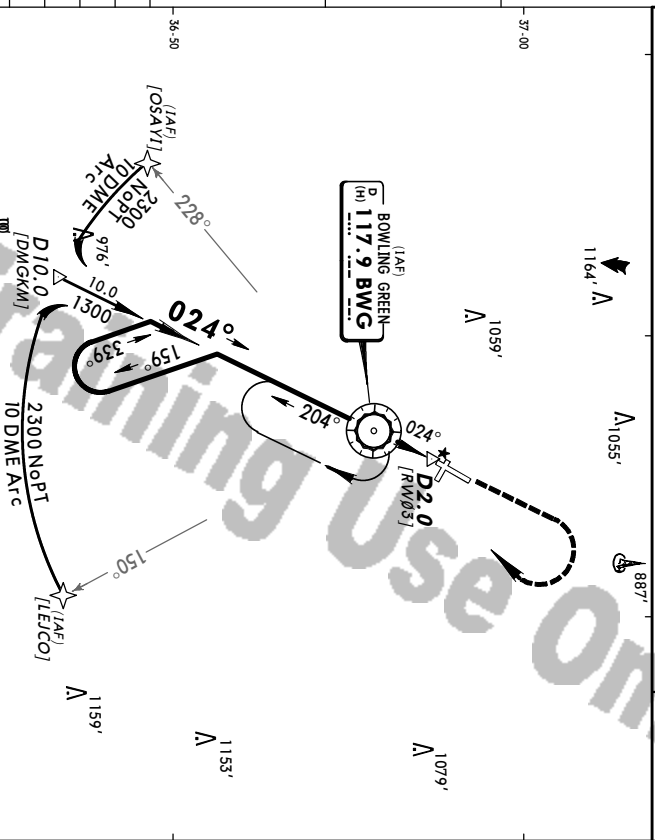
**BOWLING GREEN, KY**  
 VOR or GPS Rwy 3

ASOS	MEMPHIS Center (R)	BOWLING GREEN-WARREN CO REGL UNICOM	CIAF 123.0
VOR 127.82	Final	Minimum Alt 133.85	MDA(H) 133.85
BWG 117.9	Apch Crs 024°	VOR 1300' (753')	Apri Elev 547'
		DA(H) 960' (413')	TDZE 547'

MISSED APCH: Climb to 2300' then RIGHT turn direct BWG VOR and hold.

Pilot controlled lighting 123.0.

MSA BWG VOR 3100'



GS	2.0	1.43	1.20	1.12	1:00	0.51	0.45
MAP or D2.0 or							
VOR to MAP	2.0	1.43	1.20	1.12	1:00	0.51	0.45

STRAGHT-IN LANDING Rwy 3

MDA(H)	960' (413')
--------	-------------

Max Kts	90	120	140	160
REL	2300'	2300'	2300'	2300'
PAPL	RT	RT	RT	RT
CIRCLE-TO-LAND				
BWG				117.9

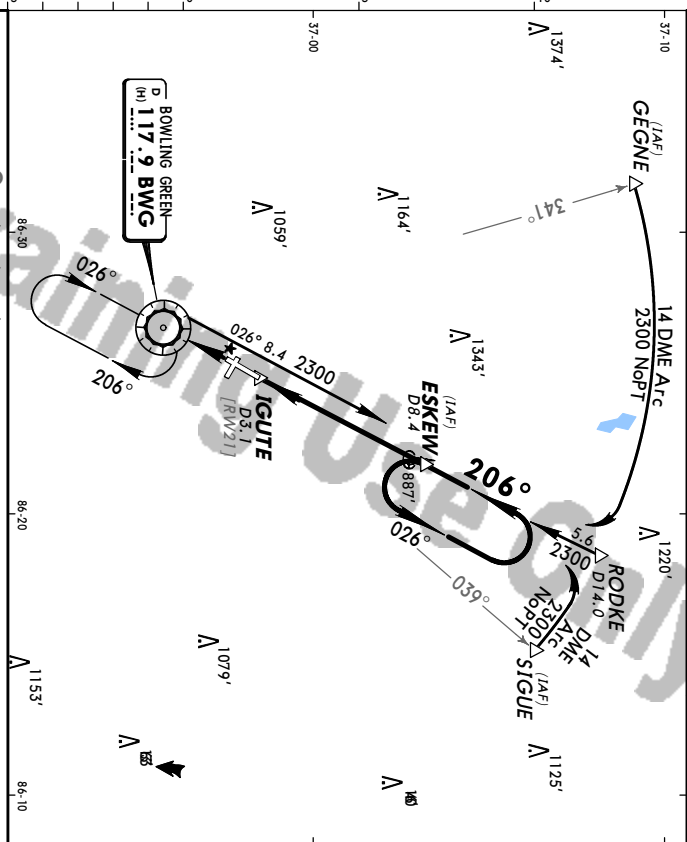
A	1	1000' (453')-1
B	120	1140' (593')-1
C	140	1140' (593')-1 1/2
D	165	1140' (593')-2

CHANGES: See other side.

© JEPPESEN SANDERSON, INC., 2002. ALL RIGHTS RESERVED.

**KBWG** **JEPPESEN** **BOWLING GREEN, KY**  
**-WARREN CO REGL** 29 MAR 02 **(3-2)** **VOR DME Rwy 21**

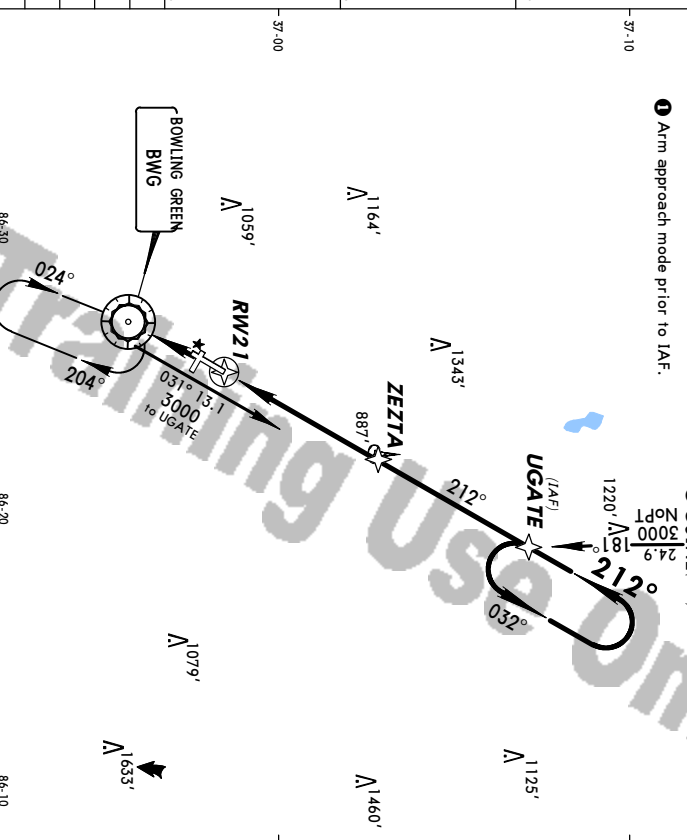
ASOS	127.82	MEAPHIS Center (R)	133.85	BOWLING GREEN-WARREN CO REGL UNICOM	CTAF 123.0
VOR	Final	Minimum Alt	MDA(H)	Apt Elev	547'
BWG	Apch Crs	<b>2300</b> (1778')	<b>1140'</b> (618')	TDZE	<b>522'</b>
<b>MISSED APCH: Climb to 2300' direct BWG VOR and hold.</b>					
1. VGSI and descent angles not coincident. 2. Pilot controlled lighting 123.0.					



Grnd speed-Kts	70	90	100	120	140	160
Descent angle (3.03°)	378	466	540	648	755	863
MAP at IGUTE/D3.1						
STRAIGHT-IN LANDING RWY 21						
MDA(H) <b>1140'</b> (618')						
A	Max Kts	MDA(H)	REL PAPI-L		BWG	
B	90	1140' (593') -1	A		D	117.9
C	120	1140' (593') -1 3/4				
D	140	1140' (593') -2				

**KBWG** **JEPPESEN** **BOWLING GREEN, KY**  
**-WARREN CO REGL** 29 MAR 02 **(18-1)** **GPS Rwy 21**

ASOS	127.82	MEAPHIS Center (R)	133.85	BOWLING GREEN-WARREN CO REGL UNICOM	CTAF 123.0
GPS	Final	Minimum Alt	MDA(H)	Apt Elev	547'
	Apch Crs	<b>2300</b> (1778')	<b>1140'</b> (618')	TDZE	<b>522'</b>
<b>MISSED APCH: Climb to 2300' direct BWG VOR and hold.</b>					
1. VGSI and descent angles not coincident. 2. Pilot controlled lighting 123.0.					



Grnd speed-Kts	70	90	100	120	140	160
Descent angle (3.25°)	403	518	575	690	805	920
MAP at RW21						
STRAIGHT-IN LANDING RWY 21						
MDA(H) <b>1140'</b> (618')						
A	Max Kts	MDA(H)	REL PAPI-L		BWG	
B	90	1140' (593') -1	A		D	117.9
C	120	1140' (593') -1 3/4				
D	140	1140' (593') -2				