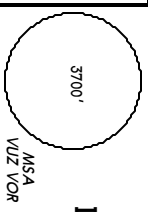


JEPPERSEN

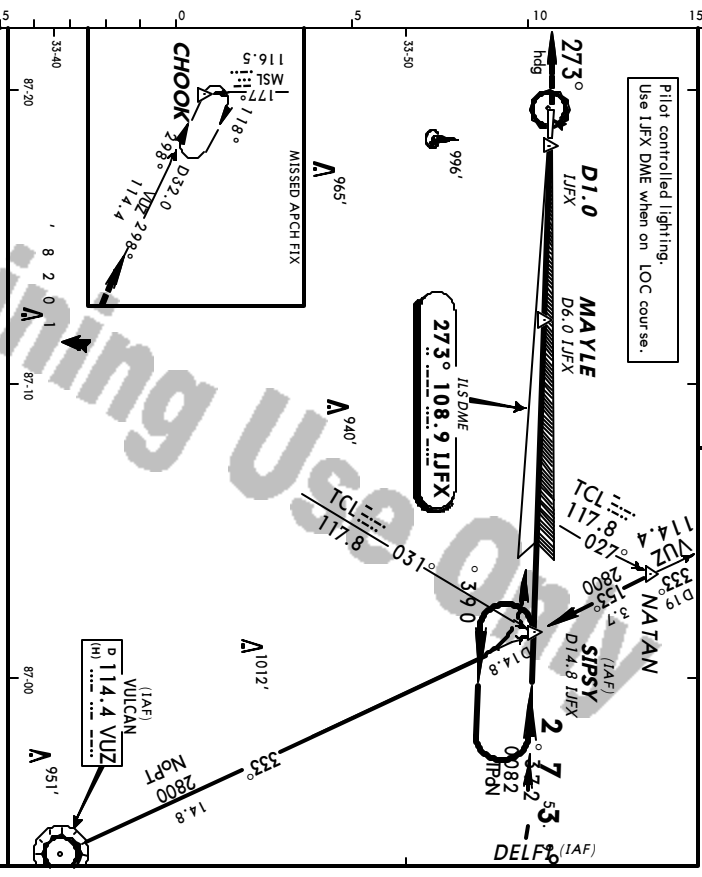
BIRMINGHAM Approach (R) **127.67**
WALKER CO-BEVILL UNICOM CTAF **122.7**

Obtain local altimeter setting on CTAF; if not received, use Birmingham.



JASPER, ALA
WALKER CO-BEVILL
IIS DME Rwy 27
LOC **108.9 IJFX**
Apt. Elev **482'**

Pilot controlled lighting.
Use IJFX DME when on LOC course.



MISSED APPROACH: Climb to **3000'** via heading **273°** and outbound **VUZ VOR R-298** to **CHOOK INT** and hold.

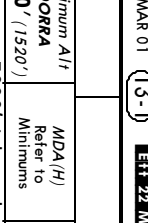
A	IIS (GS out)			CIRCLE-TO-LAND		
	DA(H)	MDA(H)	With Birmingham Altimeter Setting	Max Kts	With Birmingham Altimeter Setting	With Birmingham Altimeter Setting
A	679' (200')	940' (461')	1160' (681')	90	1000' (518')-1	1240' (758')-1/2
B	3/4	1/2	1	120	1000' (518')-1/2	1240' (758')-2/4
C	1/2	1/4	2	140	1000' (518')-1/2	1240' (758')-2/4
D	NA	NA	NA	NA	NA	NA

A	B	C	D	GRD SPEED-KTS					
				70	90	100	120	140	160
GS	300'	377'	485'	539'	646'	754'	862'		
MAP at D1.0 IJFX									

JEPPERSEN

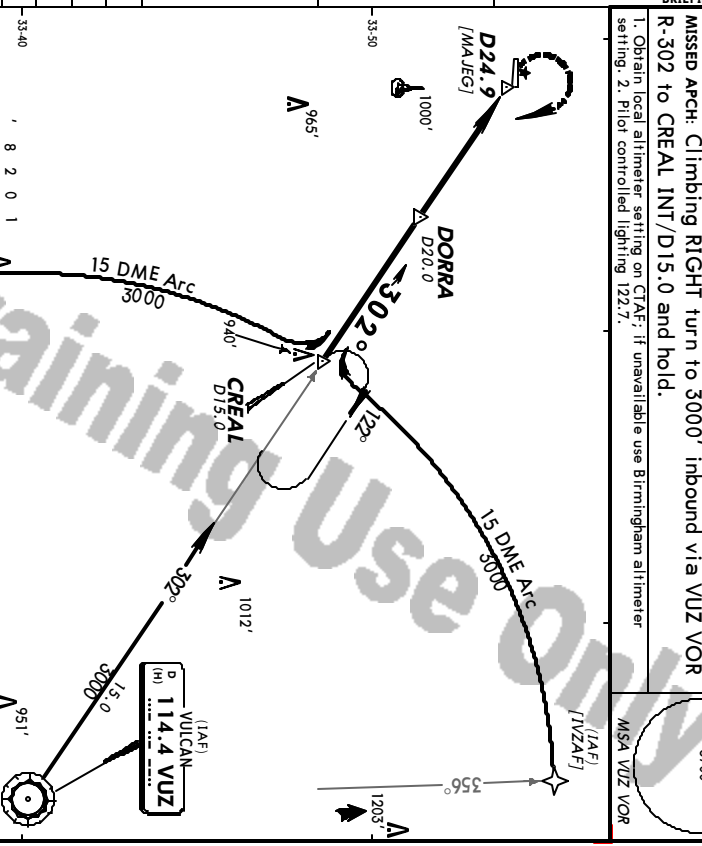
BIRMINGHAM Approach (R) **127.67**
WALKER CO-BEVILL UNICOM CTAF **122.7**

Obtain local altimeter setting on CTAF; if not received, use Birmingham.



JASPER, ALA
WALKER CO-BEVILL
VOR DME or GPS-A
LOC **114.4 VUZ**
Apt. Elev **480'**

Pilot controlled lighting.



MISSED APCH: Climbing RIGHT turn to **3000'** inbound via **VUZ VOR R-302** to **CREAL INT/D15.0** and hold.

A	IIS (GS out)			CIRCLE-TO-LAND		
	DA(H)	MDA(H)	With Birmingham Altimeter Setting	Max Kts	With Birmingham Altimeter Setting	With Birmingham Altimeter Setting
A	1160' (680')	1320' (840')	1320' (840')	90	1160' (680')	1320' (840')
B	1/2	1/4	1	120	1160' (680')	1320' (840')
C	1/4	1/2	2	140	1160' (680')	1320' (840')
D	NA	NA	NA	NA	NA	NA

A	B	C	D <th colspan="6">GRD SPEED-KTS</th>	GRD SPEED-KTS					
				70	90	100	120	140	160
GS	300'	377'	485'	539'	646'	754'	862'		
MAP at D24.9									