

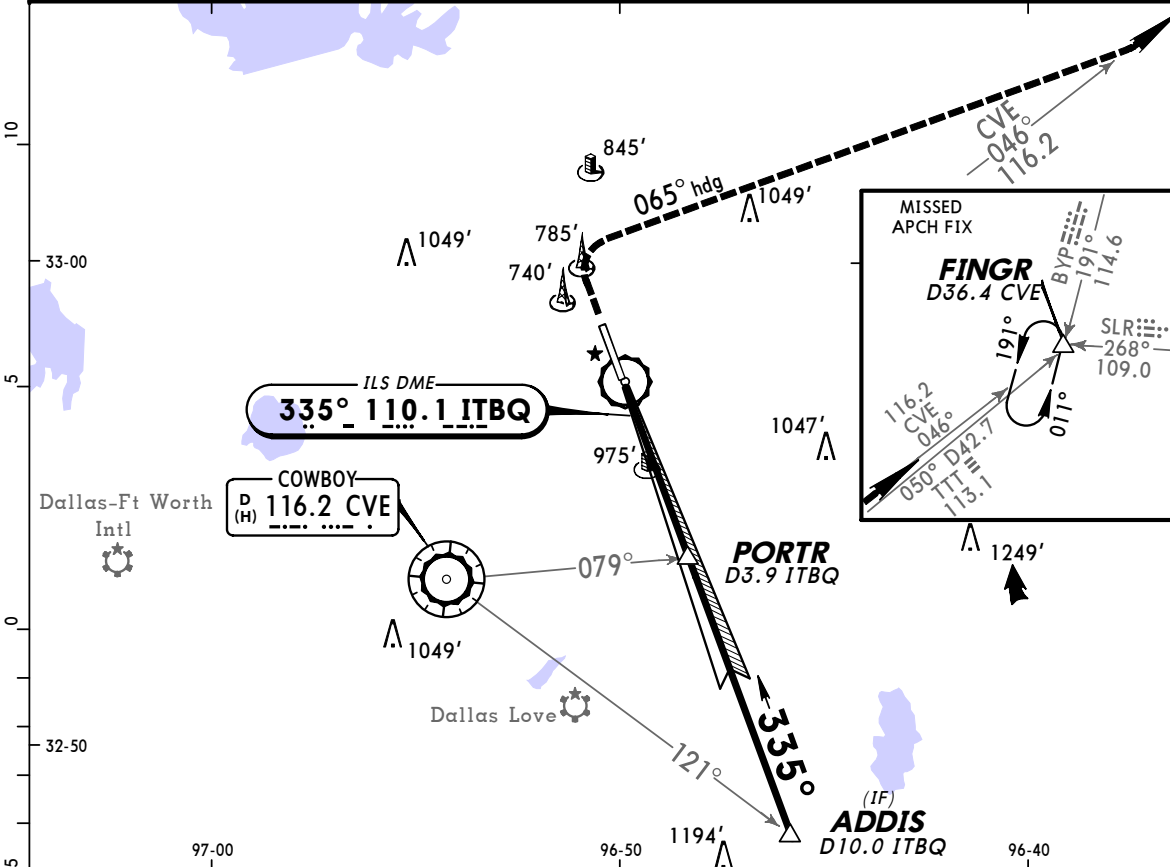
**KADS/ADS
 ADDISON**

JEPPESEN

**DALLAS, TEXAS
 ILS or LOC Rwy 33**

4 MAY 07
Eff 10 May 21-2

*ATIS 133.4		REGIONAL Approach (R) 124.3		*ADDISON Tower CTAF 126.0		*Ground 121.6	
LOC ITBQ 110.1		Final Apch Crs 335°		GS PORTR 2000' (1356')		ILS DA(H) (CONDITIONAL) 894' (250')	
Apt Elev 644'		TDZE 644'		MISSED APCH: Climb to 1500' then climbing RIGHT turn to 5000' via hdg 065° and outbound on CVE VOR R-046 to FINGR/D36.4 CVE and hold.			
Alt Set: INCHES		Trans level: FL 180		Trans alt: 18000'			
1. RADAR required.		2. When Twr inop, obtain local altimeter setting on UNICOM 122.95; if not received, use Dallas Love altimeter setting.		3. Visibility reduction by helicopters not authorized.			
4. Pilot controlled lighting 126.0.		MSA CVE VOR		2700'			



TCH 54'		TDZE 644'		4.1		6.1	
PORTR D3.9 ITBQ GS 2000'		ADDIS D10.0 ITBQ GS 2000'		335°		2500'	

Gnd speed-Kts	70	90	100	120	140	160	REIL	1500'	5000'	via	065°	and	CVE
GS	3.00°	377	484	538	646	753		861	↑	RT	hdg	116.2	R-046
PORTR to MAP	4.1	3:31	2:44	2:28	2:03	1:45	1:32						

TERPS	STRAIGHT-IN LANDING RWY33				CIRCLE-TO-LAND		
	With Local Altimeter Setting		With Dallas Love Altimeter Setting		With Local Altimeter Setting	With Dallas Love Altimeter Setting	
	ILS DA(H)	LOC (GS out) MDA(H)	ILS DA(H)	LOC (GS out) MDA(H)	MDA(H)	MDA(H)	
A	894'(250')	1240'(596')	933'(289')	1280'(636')	1240'(596')-1	1280'(636')-1	
B	1	1	1	1 1/2	1240'(596')-1 1/2	1280'(636')-1 1/2	
C		1 1/2					1 1/2
D		1 3/4					1 3/4

FOR TRAINING PURPOSES ONLY

